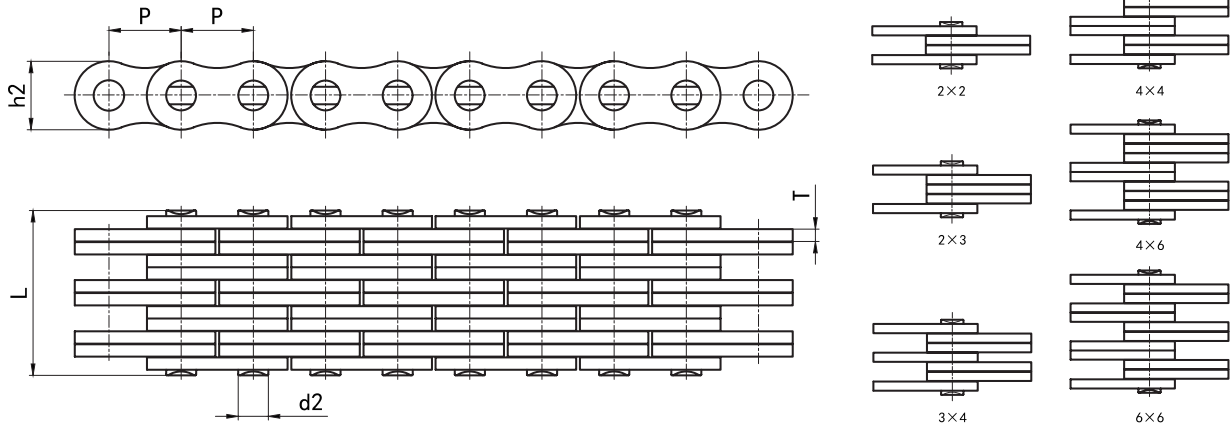


重型板式链条 Leaf Chains (Series BL)



ISO 链号	ANSI 链号	节距 Pitch	板数组合 Plate lacing		内链板高度	链板厚度	销轴直径	销轴长度	抗拉强度	平均抗拉强度	每米重量
					Plate depth	Plate thickness	Pin diameter	Pin length	Ultimate tensile strength	Average tensile strength	Weight per meter
ISO Chain No.	ANSI Chain No.	P			h2 max	T max	d2 max	L max	Q min	Q ₀	q
		mm			mm	mm	mm	mm	KN	KN	kg/m
LH0822	BL422	12.70	2	2	12.07	2.08	5.09	11.1	22.2	27.6	0.68
LH0823	BL423		2	3				13.2	22.2	27.6	0.84
LH0834	BL434		3	4				17.4	33.4	41.4	1.13
LH0844	BL444		4	4				19.6	44.5	56.0	1.28
LH0846	BL446		4	6				23.8	44.5	56.0	1.65
LH0866	BL466		6	6				28.0	66.7	82.0	1.96
LH1022	BL522	15.875	2	2	15.09	2.44	5.96	12.9	33.4	43.2	1.07
LH1023	BL523		2	3				15.4	33.4	43.2	1.27
LH1034	BL534		3	4				20.4	48.9	65.6	1.69
LH1044	BL544		4	4				22.8	66.7	84.5	1.89
LH1046	BL546		4	6				27.7	66.7	84.5	2.40
LH1066	BL566		6	6				32.7	100.1	126.0	2.80
LH1222	BL622	19.05	2	2	18.11	3.30	7.94	17.4	48.9	64.0	1.68
LH1223	BL623		2	3				20.8	48.9	64.0	2.04
LH1234	BL634		3	4				27.5	75.6	102.8	2.83
LH1244	BL644		4	4				30.8	97.9	121.0	3.18
LH1246	BL646		4	6				37.5	97.9	121.0	4.01
LH1266	BL666		6	6				44.2	146.8	192.0	4.73
LH1622	BL822	25.40	2	2	24.13	4.09	9.54	21.4	84.5	110.0	2.59
LH1623	BL823		2	3				25.5	84.5	110.0	3.20
LH1634	BL834		3	4				33.8	129.0	170.0	4.44
LH1644	BL844		4	4				37.9	169.0	215.0	5.04
LH1646	BL846		4	6				46.2	169.0	215.0	6.32
LH1666	BL866		6	6				54.5	253.6	325.0	7.54

输送机
Conveyor Chains

曳引链
Leaf Chains

传动链
Driving Chains

键槽和螺纹
Keyway And Thread

A 系列滚子链轮
Sprocket - A Series

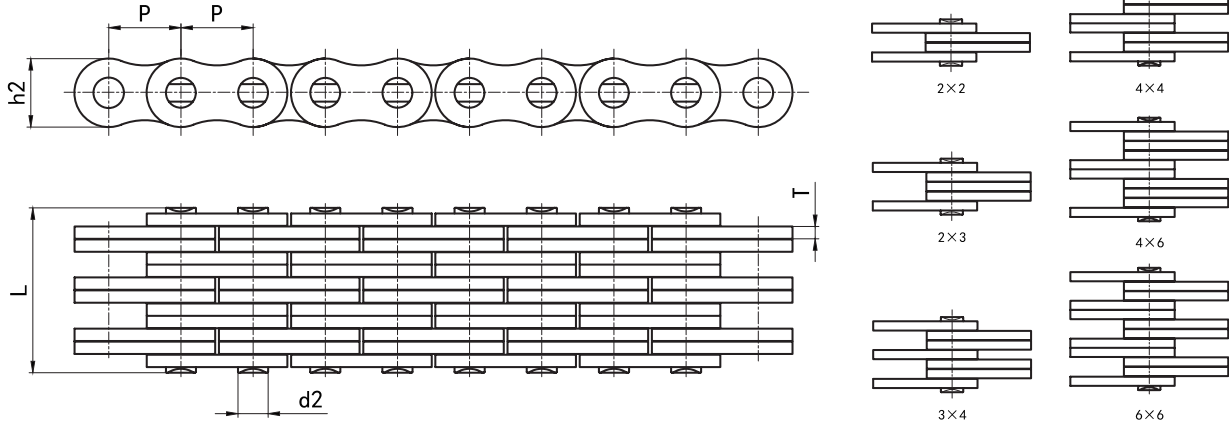
B 系列滚子链轮
Sprocket - B Series

双节距链轮
Double Pitch Sprocket

双驱链轮
Double-Drive Sprocket

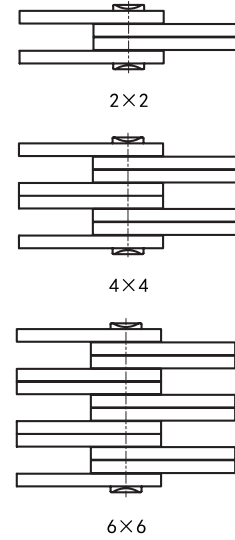
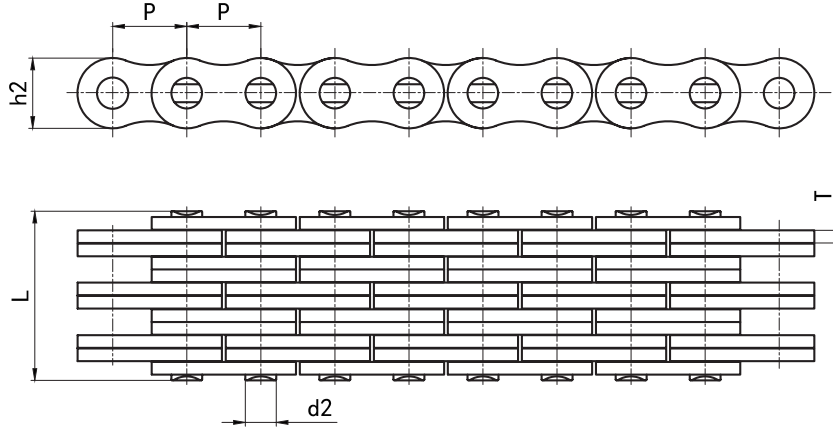
同步带轮
Synchronous Pulley

重型板式链条 Leaf Chains (Series BL)



ISO 链号	ANSI 链号	节距 Pitch	板数组合 Plate lacing		内链板高度	链板厚度	销轴直径	销轴长度	抗拉强度	平均抗拉强度	每米重量
					Plate depth h2 max mm	Plate thickness T max mm	Pin diameter d2 max mm	Pin length L max mm	Ultimate tensile strength Q min KN	Average tensile strength Q ₀ KN	Weight per meter q kg/m
ISO Chain No.	ANSI Chain No.	P mm									
LH2022	BL1022	31.75	2	2	30.18	4.90	11.11	25.4	115.6	152.0	3.76
LH2023	BL1023		2	3				30.4	115.6	152.0	4.69
LH2034	BL1034		3	4				40.3	182.4	232.0	6.55
LH2044	BL1044		4	4				45.2	231.3	292.0	7.48
LH2046	BL1046		4	6				55.1	231.3	292.0	9.29
LH2066	BL1066		6	6				65.0	347.0	432.0	11.16
LH2422	BL1222	38.10	2	2	36.2	5.77	12.71	29.7	151.2	192.0	4.83
LH2423	BL1223		2	3				35.5	151.2	192.0	6.54
LH2434	BL1234		3	4				47.1	244.6	316.0	9.10
LH2444	BL1244		4	4				52.9	302.5	383.0	10.39
LH2446	BL1246		4	6				64.6	302.5	383.0	12.01
LH2466	BL1266		6	6				76.2	453.7	545.0	14.58
LH2822	BL1422	44.45	2	2	42.24	6.60	14.29	33.6	191.3	227.0	7.31
LH2823	BL1423		2	3				40.2	191.3	227.0	9.06
LH2834	BL1434		3	4				53.4	315.8	373.0	11.32
LH2844	BL1444		4	4				60.0	382.6	452.0	12.96
LH2846	BL1446		4	6				73.2	382.6	452.0	18.00
LH2866	BL1466		6	6				86.4	578.3	684.0	22.51
LH3222	BL1622	50.80	2	2	48.26	7.52	17.46	40.0	289.1	343.0	9.84
LH3223	BL1623		2	3				46.6	289.1	343.0	12.16
LH3234	BL1634		3	4				61.8	440.4	522.0	16.95
LH3244	BL1644		4	4				69.3	578.3	682.0	18.97
LH3246	BL1646		4	6				84.5	578.3	682.0	24.09
LH3266	BL1666		6	6				100.0	867.4	1000.0	28.73

轻型板式链条 Leaf Chains (Series LL)



ISO 链号 ISO Chain No.	节距 Pitch P mm	板数组合 Plate lacing		内链板高度	链板厚度	销轴直径	销轴长度	抗拉强度	平均抗拉强度	每米重量
				Plate depth	Plate thickness	Pin diameter	Pin length	Ultimate tensile strength	Average tensile strength	Weight per meter
				h2 max mm	T max mm	d2 max mm	L max mm	Q min KN	Q ₀ kN	q kg/m
LL0822	12.7	2	2	10.92	1.55	4.45	8.5	18.0	20.5	0.41
LL0844		4	4				14.6	36.0	40.7	0.84
LL0866		6	6				20.7	54.0	60.0	1.20
LL1022	15.875	2	2	16.13	1.90	5.72	9.3	22.0	25.6	0.59
LL1044		4	4				16.1	44.0	51.2	1.10
LL1066		6	6				22.9	66.0	76.3	1.57
LL1222	19.05	2	2	26.42	3.70	10.19	10.7	29.0	33.5	0.71
LL1244		4	4				18.5	58.0	66.5	1.45
LL1266		6	6				26.3	87.0	99.7	2.12
LL1622	25.40	2	2	37.08	6.45	15.90	17.2	60.0	66.7	1.52
LL1644		4	4				30.2	120.0	141.0	2.90
LL1666		6	6				43.2	180.0	209.0	4.40
LL2022	31.75	2	2	37.08	6.45	15.90	20.1	95.0	109.5	2.33
LL2044		4	4				35.1	190.0	218.6	4.40
LL2066		6	6				50.1	285.0	324.6	6.79
LL2422	38.10	2	2	37.08	6.45	15.90	28.4	170.0	195.5	4.47
LL2444		4	4				49.4	340.0	380.8	8.25
LL2466		6	6				70.4	510.0	572.0	12.52
LL2822	44.45	2	2	37.08	6.45	15.90	34.0	200.0	225.0	5.10
LL2844		4	4				60.0	400.0	450.0	9.90
LL2866		6	6				86.0	600.0	672.5	14.60
LL3222	50.80	2	2	37.08	6.45	15.90	35.0	260.0	292.0	6.20
LL3244		4	4				61.0	520.0	582.5	12.30
LL3266		6	6				87.0	780.0	875.0	18.30

输送机
Conveyor Chains

曳引链
Leaf Chains

传动链
Driving Chains

键槽和螺纹
Keyway And Thread

A 系列滚子链轮
Sprocket - A Series

B 系列滚子链轮
Sprocket - B Series

双节距链轮
Double Pitch Sprocket

双驱动链轮
Double-Drive Sprocket

同步带轮
Synchronous Pulley