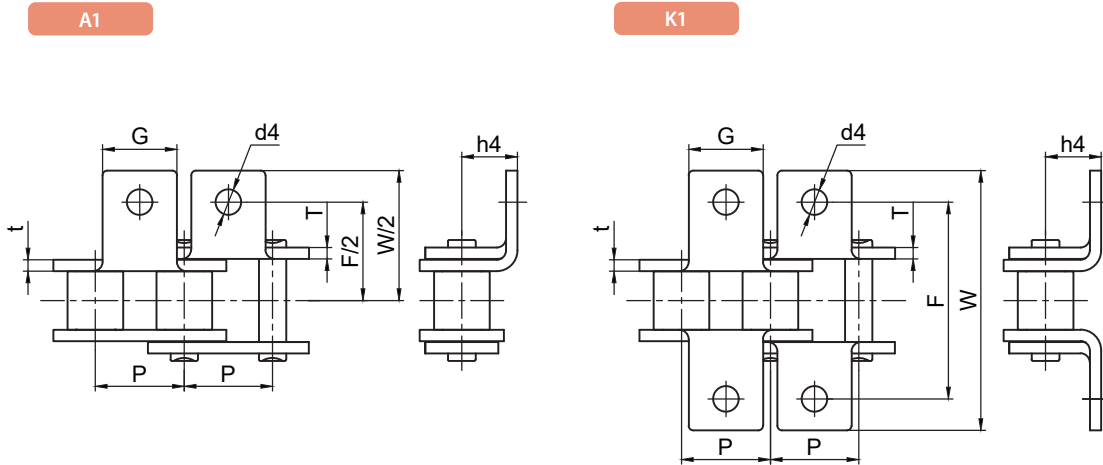


短节距带附件输送链 Short Pitch Conveyor Chain With Attachment



DIN/ISO 链号 Chain No.	征和链号 CHOHO Chain No.	P	G	F	W	t/T max	h4	d4 min
		mm	mm	mm	mm	mm	mm	mm
35	06C	9.525	7.9	19.00	28.6	1.30	6.35	3.4
40	08A	12.700	9.5	25.40	35.2	1.50	7.90	3.4
50	10A	15.875	12.7	31.80	46.2	2.00	10.30	5.5
60	12A	19.050	15.9	38.10	55.6	2.42	11.90	5.5
80	16A	25.400	19.1	50.80	64.8	3.10	15.90	6.8
100	20A	31.750	25.4	63.50	89.8	4.00	19.80	8.7
120	24A	38.100	28.6	76.20	109.4	4.80	23.00	9.8
140	28A	44.450	34.9	88.90	123.0	5.60	28.60	11.4
160	32A	50.800	38.1	101.60	142.8	6.40	31.80	13.1
200	40A	63.500	50.8	127.00	179.0	8.00	42.90	16.3
08B	08B	12.700	9.5	25.40	36.4	1.60	8.90	4.5
10B	10B	15.875	14.3	31.80	44.6	1.70	10.30	5.3
12B	12B	19.050	15.9	38.10	52.4	1.85	13.50	6.4
16B	16B	25.400	19.1	50.80	72.6	4.0/3.0	15.90	6.4
20B	20B	31.750	25.4	63.50	100.5	4.5/3.5	19.80	9.0
24B	24B	38.100	28.6	76.20	108.4	6.0/4.8	26.70	10.5
28B	28B	44.450	34.9	88.90	123.0	7.5/6.0	28.60	13.1
32B	32B	50.800	38.1	101.60	142.8	7.0/6.0	31.80	13.1

输送链
Conveyor Chains

曳引链
Leaf Chains

传动链
Driving Chains

键槽和螺纹
Keyway And Thread

A系列滚子链轮
Sprocket - A Series

B系列滚子链轮
Sprocket - B Series

双节距链轮
Double Pitch Sprocket

双驱链轮
Double-Drive Sprocket

同步带轮
Synchronous Pulley

短节距带附件输送链 Short Pitch Conveyor Chain With Attachment

输送带
Conveyor Chains

曳引链
Leaf Chains

传动链
Driving Chains

键槽和螺纹
Keyway And Thread

A系列滚子链轮
Sprocket - A-Series

B系列滚子链轮
Sprocket - B-Series

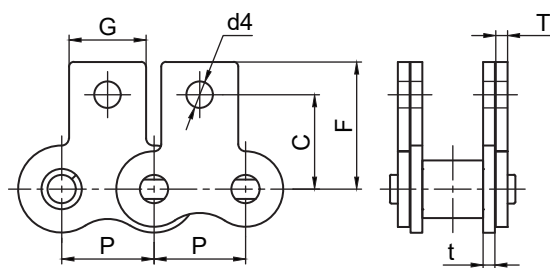
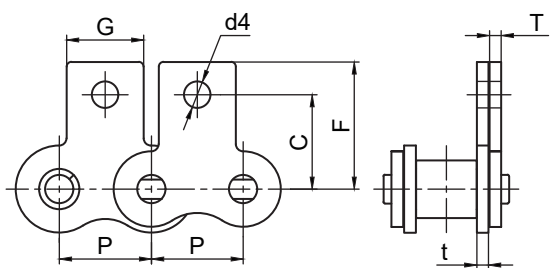
双节距链轮
Double Pitch Sprocket

双驱动链轮
Double-Drive Sprocket

同步带轮
Synchronous Pulley

SA1 单侧

SK1 双侧



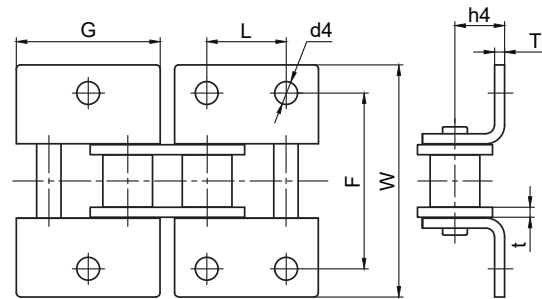
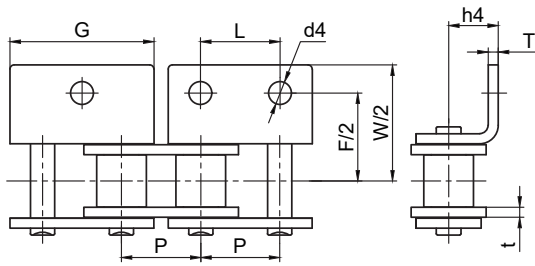
DIN/ISO 链号 Chain No.	征和链号 CHOHO Chain No.	P	G	C	F	t/T max	d4 min
		mm	mm	mm	mm	mm	mm
35	06C	9.525	7.9	9.50	14.55	1.30	3.4
40	08A	12.700	9.5	12.70	19.05	1.50	3.4
50	10A	15.875	12.7	15.90	25.25	2.00	5.5
60	12A	19.050	15.9	18.30	29.25	2.42	5.5
80	16A	25.400	19.1	24.60	34.70	3.10	6.8
100	20A	31.750	25.4	31.80	43.30	4.00	8.7
120	24A	38.100	28.6	36.50	51.60	4.80	9.8
140	28A	44.450	34.9	44.50	62.00	5.60	11.4
160	32A	50.800	38.1	50.80	69.85	6.40	13.1
200	40A	63.500	50.8	63.50	88.90	8.00	16.3
08B	08B	12.700	9.5	13.00	18.90	1.60	4.3
10B	10B	15.875	14.3	16.50	22.95	1.70	5.3
12B	12B	19.050	15.9	21.00	28.60	1.85	6.4
16B	16B	25.400	19.1	23.00	34.00	4.0/3.0	6.4
20B	20B	31.750	25.4	30.50	45.70	4.5/3.5	8.7
24B	24B	38.100	28.6	36.00	61.50	6.0/4.8	10.5

WA1

WA2

WK1

WK2



DIN/ISO 链号 Chain No.	征和链号 CHOHO Chain No.	P	G	L	F	W	t/T max	h4	d4 min
		mm	mm	mm	mm	mm	mm	mm	mm
35	06C	9.525	17.30	9.525	19.00	28.6	1.30	6.35	2.80
40	08A	12.700	23.00	12.70	25.40	35.6	1.50	7.90	3.40
50	10A	15.875	28.70	15.88	31.80	46.8	2.00	10.30	5.50
60	12A	19.050	34.50	19.05	38.10	56.4	2.42	11.90	5.50
80	16A	25.400	48.40	25.40	50.80	70.4	3.10	15.90	6.80
100	20A	31.750	57.60	31.75	63.50	89.8	4.00	19.80	8.70
120	24A	38.100	69.00	38.10	76.20	108.8	4.80	23.00	9.80
140	28A	44.450	80.70	44.45	88.90	123.0	5.60	28.60	11.4
160	32A	50.800	92.10	50.80	101.60	142.8	6.40	31.80	13.1
200	40A	63.500	115.10	63.50	127.00	179.0	8.00	42.90	16.3
08B	08B	12.700	23.20	12.70	25.40	36.4	1.60	8.90	4.3
10B	10B	15.875	29.30	15.88	31.80	44.6	1.70	10.30	5.3
12B	12B	19.050	33.90	19.05	38.10	52.4	1.85	13.50	6.4
16B	16B	25.400	46.10	25.40	50.80	72.6	4.0/3.0	15.90	6.4
20B	20B	31.750	56.00	31.75	63.50	100.5	4.5/3.5	19.80	8.7
24B	24B	38.100	69.90	38.10	76.20	108.4	6.0/4.8	26.70	10.5
28B	28B	44.450	81.20	44.45	88.90	123.0	7.5/6.0	28.60	13.1
32B	32B	50.800	91.60	50.80	101.60	142.8	7.0/6.0	31.80	13.1

短节距带附件输送链 Short Pitch Conveyor Chain With Attachment

输送链
Conveyor Chains

曳引链
Leaf Chains

传动链
Driving Chains

键槽和螺纹
Keyway And Thread

A系列滚子链轮
Sprocket - A-Series

B系列滚子链轮
Sprocket - B-Series

双节距链轮
Double Pitch Sprocket

双驱链轮
Double-Drive Sprocket

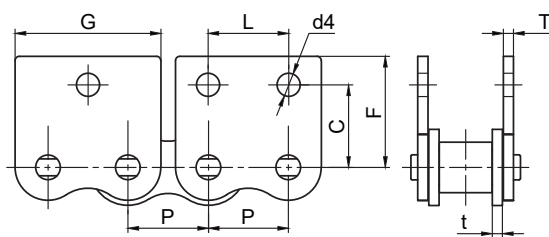
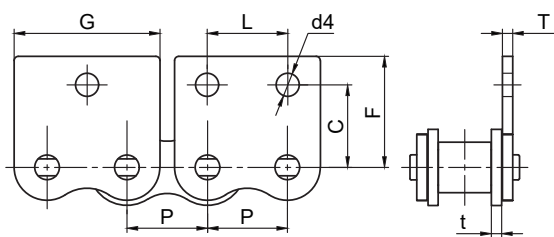
同步带轮
Synchronous Pulley

WSA1

WSA2

WSK1

WSK2



DIN/ISO 链号 Chain No.	征和链号 CHOHO Chain No.	P	G	L	C	F	t/T max	d4 min
		mm	mm	mm	mm	mm	mm	mm
35	06C	9.525	17.30	9.525	9.50	14.55	1.30	2.8
40	08A	12.700	23.00	12.700	12.70	17.40	1.50	3.4
50	10A	15.875	28.70	15.875	15.90	23.05	2.00	5.5
60	12A	19.050	34.50	19.050	18.30	26.86	2.42	5.5
80	16A	25.400	48.40	25.400	24.45	35.45	3.10	6.8
100	20A	31.750	57.60	31.750	31.80	44.00	4.00	9.2
120	24A	38.100	69.00	38.100	36.50	51.60	4.80	9.8
140	28A	44.450	80.70	44.450	44.50	62.00	5.60	11.4
160	32A	50.800	92.10	50.800	50.80	69.85	6.40	13.1
200	40A	63.500	115.10	63.500	63.50	88.90	8.00	16.3
08B	08B	12.700	23.20	12.700	13.00	18.90	1.60	4.3
10B	10B	15.875	29.30	15.875	16.50	22.95	1.70	5.3
12B	12B	19.050	33.90	19.050	21.00	28.60	1.85	6.4
16B	16B	25.400	46.10	25.400	23.00	34.00	4.0/3.0	6.4
20B	20B	31.750	56.00	31.750	30.50	45.70	4.5/3.5	9.0
24B	24B	38.100	69.90	38.100	36.00	61.50	6.0/4.8	10.5