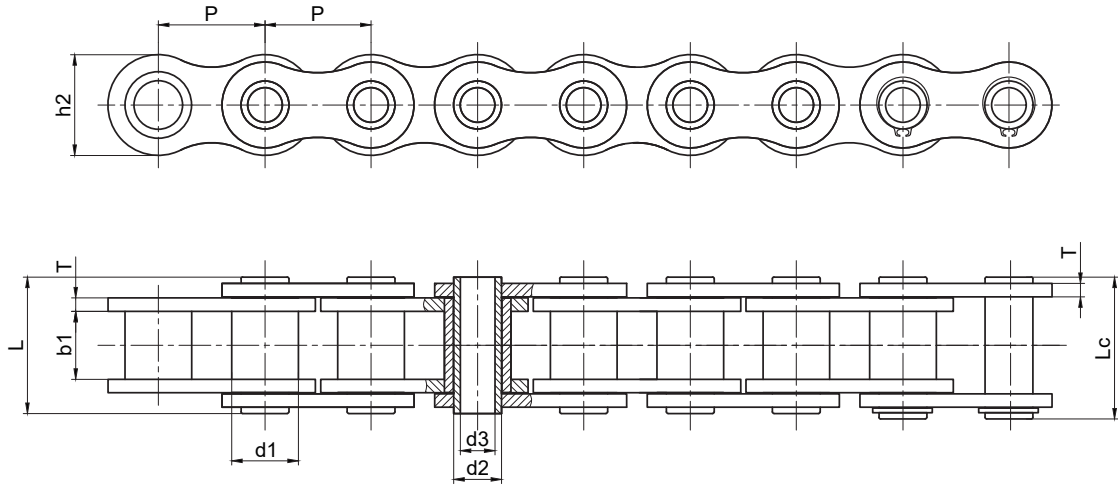


短节距空心销轴输送链 Short Pitch Hollow Pin Conveyor Chain



征和链号 CHOHO Chain No.	节距	套筒直径	内节内宽	销轴直径		销轴长度		内链板高度	链板厚度	抗拉强度	平均抗拉强度	每米重量
	Pitch	Sleeve diameter	Width between inner plates	Pin diameter		Pin length		Inner plate depth	Plate thickness	Ultimate tensile strength	Average tensile strength	Weight per meter
	P	d1 max	b1 min	d2 max	d3 min	L max	Lc max	h2 max	T max	Q min	Q <sub>0</sub>	q
	mm	mm	mm	mm	mm	mm	mm	mm	mm	kN	kN	kg/m
40HP	12.700	7.95	7.85	5.63	4.00	16.5	17.6	12.00	1.50	11.0	12.20	0.54
50HP	15.875	10.16	9.40	7.03	5.09	20.7	21.9	15.09	2.00	20.0	22.60	0.91
60HP	19.050	11.91	12.57	8.31	5.96	25.8	26.8	18.00	2.42	24.0	26.90	1.29
80HP	25.400	15.88	15.75	11.40	7.94	32.5	33.8	24.00	3.20	50.0	52.00	2.26
08BHP	12.700	8.51	7.75	6.55	4.50	16.8	17.6	11.80	1.30	11.1	12.10	0.52
10BHP	15.875	10.16	9.65	7.00	5.00	19.2	20.6	14.70	1.70	14.5	16.00	0.86
12BHP	19.050	12.07	11.68	8.10	5.75	21.6	22.8	16.00	1.85	18.5	20.40	1.09

Conveyor Chains

Leaf Chains

Driving Chains

Keyway And Thread

Sprocket - A Series

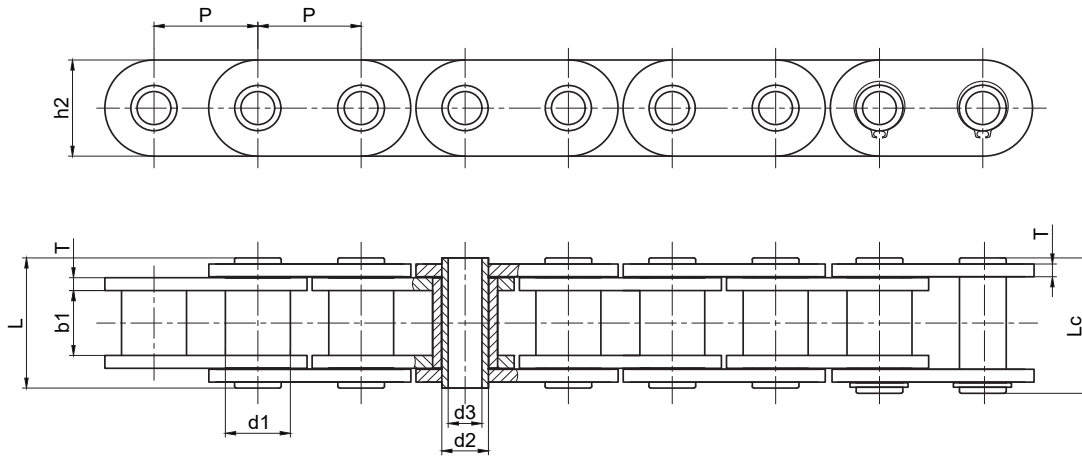
Sprocket - B Series

Double Pitch Sprocket

Double Drive Sprocket

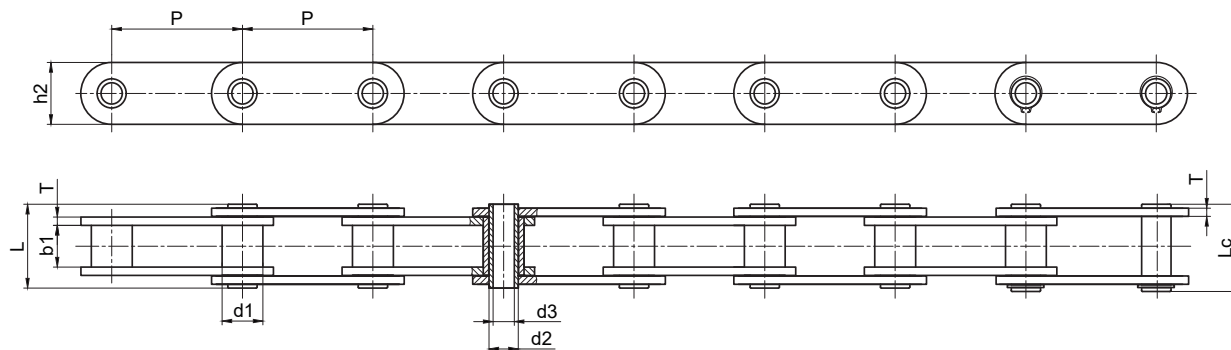
Synchronous Pulley

■ 直板 Straight Panel



征和链号 CHOHO Chain No.	节距	套筒直径	内节内宽	销轴直径		销轴长度		内链板高度	链板厚度	抗拉强度	平均抗拉强度	每米重量
	Pitch	Sleeve diameter	Width between inner plates	Pin diameter		Pin length		Inner plate depth	Plate thickness	Ultimate tensile strength	Average tensile strength	Weight per meter
	P	d1 max	b1 min	d2 max	d3 min	L max	Lc max	h2 max	T max	Q min	Q <sub>0</sub>	q
	mm	mm	mm	mm	mm	mm	mm	mm	mm	kN	kN	kg/m
C40HP	12.700	7.95	7.85	5.63	4.00	16.5	17.6	12.00	1.50	11.0	12.20	0.64
C50HP	15.875	10.16	9.40	7.03	5.09	20.7	21.9	15.09	2.00	20.0	22.60	1.05
C60HP	19.050	11.91	12.57	8.31	5.96	25.8	26.8	18.00	2.42	24.0	26.90	1.52
C80HP	25.400	15.88	15.75	11.40	7.94	32.5	33.8	24.00	3.20	50.0	52.00	2.63

# 双节距空心销轴输送链 Double Pitch Hollow Pin Conveyor Chain



征和链号 CHOHO Chain No.	节距	套筒 直径	内节内宽	销轴直径		销轴长度		内链板高度	链板厚度	抗拉强度	平均抗拉强度	每米重量
	Pitch	Bush diameter	Width between inner plates	Pin diameter		Pin length		Inner plate depth	Plate thickness	Ultimate tensile strength	Average tensile strength	Weight per meter
	p	d1 max	b1 min	d2 max	d3 min	L max	Lc max	h2 max	T max	Q min	Q <sub>0</sub>	q
	mm	mm	mm	mm	mm	mm	mm	mm	mm	kN	kN	kg/m
C2040HP	25.400	7.95	7.85	5.63	4.00	16.5	17.6	12.00	1.50	11.0	12.60	0.46
C2050HP	31.750	10.16	9.40	7.22	5.09	20.5	21.8	15.00	2.00	20.4	22.80	0.76
C2060HP	38.100	11.91	12.57	8.31	5.96	25.8	26.8	17.00	2.42	24.0	27.10	1.02
C2080HP	50.800	15.88	15.75	11.40	7.94	32.5	33.8	24.00	3.20	50.0	52.00	1.81

输送机  
Conveyor Chains

曳引链  
Leaf Chains

传动链  
Driving Chains

键槽和螺纹  
Keyway And Thread

A系列滚子链轮  
Sprocket - A Series

B系列滚子链轮  
Sprocket - B Series

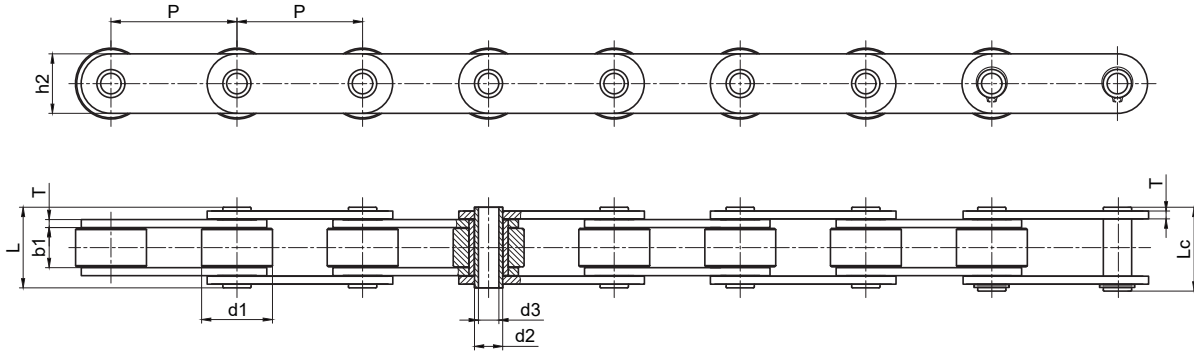
双节距链轮  
Double Pitch Sprocket

双驱链轮  
Double-Drive Sprocket

同步带轮  
Synchronous Pulley

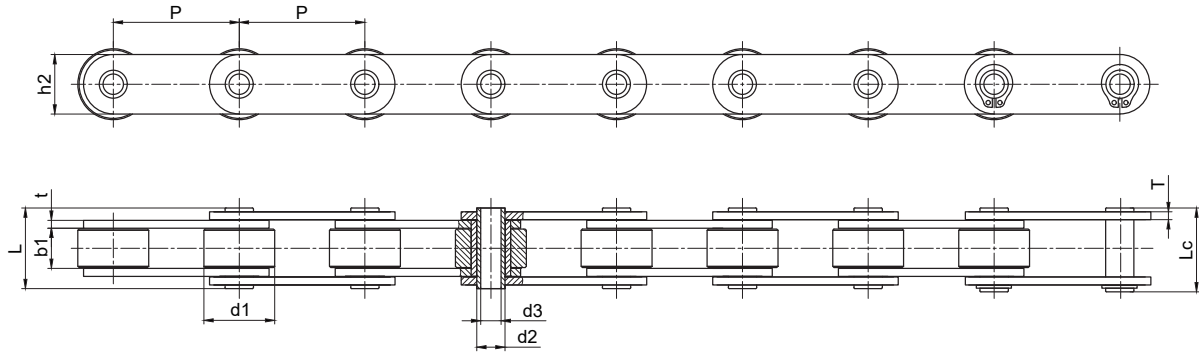
# 双节距空心销轴输送链 Double Pitch Hollow Pin Conveyor Chain

## 大滚子型 Large Roller Type



征和链号 CHOHO Chain No.	节距	滚子直径	内节内宽	销轴直径		销轴长度		内链板高度	链板厚度	抗拉强度	平均抗拉强度	每米重量
	Pitch	Roller diameter	Width between inner plates	Pin diameter		Pin length		Inner plate depth	Plate thickness	Ultimate tensile strength	Average tensile strength	Weight per meter
	P	d1 max	b1 min	d2 max	d3 min	L max	Lc max	h2 max	T max	Q min	Q <sub>0</sub>	q
	mm	mm	mm	mm	mm	mm	mm	mm	mm	kN	kN	kg/m
C2042HP	25.400	15.88	7.85	5.63	4.00	16.5	17.6	12.00	1.50	11.0	12.60	0.78
C2052HP	31.750	19.05	9.40	7.22	5.09	20.5	21.8	15.00	2.00	20.4	22.80	0.95
C2062HP	38.100	22.23	12.57	8.31	5.96	25.8	26.8	17.00	2.42	24.0	27.10	1.72
C2082HP	50.800	28.58	15.75	11.40	7.94	32.5	33.8	24.00	3.20	50.0	52.00	2.82

非标空心销轴输送链 Non-standard Hollow Pin Conveyor Chain



征和链号 CHOHO Chain No.	节距	滚子直径	内节内宽	销轴直径		销轴长度		内链板高度	链板厚度	抗拉强度	每米重量
	Pitch	Roller diameter	Width between inner plates	Pin diameter		Pin length		Inner plate depth	Plate thickness	Ultimate tensile strength	Weight per meter
	P	d1 max	b1 min	d2 max	d3 min	L max	Lc max	h2 max	t/T max	Q min	q
	mm	mm	mm	mm	mm	mm	mm	mm	mm	kN	kg/m
P50HPV1	50.00	31.00	15.00	12.00	8.20	36.1	37.5	25.00	4.0	65	3.83
P76.2HP	76.20	32.00	16.00	14.00	8.50	37.4	38.3	27.70	4.0	75	3.34
P76.2HHP	76.20	32.00	16.00	14.00	8.50	41.45	42.45	27.70	5.0	82	3.75
P76.2HHPV1	76.20	40.00	16.00	14.00	8.50	44.0	45.5	27.70	6.0/5.0	100	4.93
MC56V1-C-160	160.00	50.00	24.00	15.50	10.20	50.0	51.6	35.00	5.0	75	5.32

输送机  
Conveyor Chains

曳引链  
Leaf Chains

传动链  
Driving Chains

键槽和螺纹  
Keyway And Thread

A系列滚子链轮  
Sprocket - A Series

B系列滚子链轮  
Sprocket - B Series

双节距链轮  
Double Pitch Sprocket

双驱链轮  
Double-Drive Sprocket

同步带轮  
Synchronous Pulley