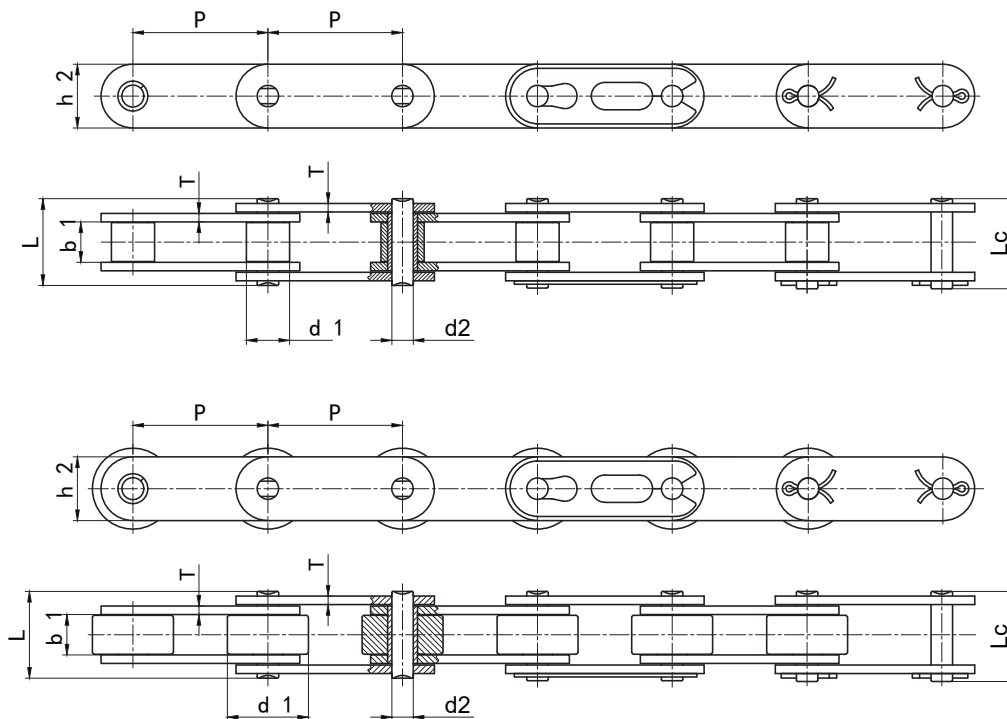


双节距输送链 Double Pitch Conveyor Chains



ISO 链号	ANSI 链号	节距	滚子直径	内节内宽	销轴直径	销轴长度		内链板高度	链板厚度	抗拉强度	平均抗拉强度	每米重量
		Pitch	Roller diameter	Width between inner plates	Pin diameter	L	Lc	Inner plate depth	Plate thickness	Ultimate tensile strength	Average tensile strength	Weight per meter
ISO Chain No.	ANSI Chain No.	P	d1 max	b1 min	d2 max	L max	Lc max	h2 max	T max	Q min	Q ₀	q
		mm	mm	mm	mm	mm	mm	mm	mm	kN	kN	kg/m
C208A	C2040	25.40	7.92	7.85	3.98	16.7	18.3	12.07	1.50	13.9	17.9	0.50
C208AL	C2042		15.88									0.84
C208AH	C2040H	25.40	7.92	7.85	3.98	18.8	20.0	12.07	2.00	13.9	19.2	0.65
C210A	C2050	31.75	10.16	9.40	5.09	20.7	23.8	15.09	2.00	21.8	29.3	0.78
C210AL	C2052		19.05									1.27
C212A	C2060	38.10	11.91	12.57	5.96	26.2	28.3	18.10	2.42	31.3	42.0	1.12
C212AL	C2062		22.23									1.61
C212AH	C2060H	38.10	11.91	12.57	5.96	30.0	32.3	18.10	3.20	31.3	42.5	1.44
C212AHL	C2062H		22.23									2.07
C216A	C2080	50.80	15.88	15.75	7.94	33.1	35.9	24.13	3.20	55.6	72.3	2.08
C216AL	C2082		28.58									3.12
C216AH	C2080H	50.80	15.88	15.75	7.94	36.8	40.5	24.13	4.00	55.6	72.5	2.54
C216AHL	C2082H		28.58									3.58
C220A	C2100	63.50	19.05	18.90	9.54	40.8	44.1	30.17	4.00	87.0	110.5	3.01
C220AL	C2102		39.67									4.83
C220AH	C2100H	63.50	19.05	18.90	9.54	44.2	47.6	30.17	4.80	87.0	112.0	3.56
C220AHL	C2102H		39.67									5.38
C224A	C2120	76.20	22.23	25.22	11.11	50.8	54.7	36.20	4.80	125.0	157.0	4.66
C224AL	C2122		44.45									7.66
C224AH	C2120H	76.20	22.23	25.22	11.11	54.5	58.2	36.20	5.60	125.0	160.0	5.26
C224AHL	C2122H		44.45									8.26
C232A	C2160	101.60	28.58	31.55	14.29	65.5	70.0	48.26	6.40	223.0	279.0	8.15
C232AL	C2162		57.15									13.00
C232AH	C2160H	101.60	28.58	31.55	14.29	68.9	73.4	48.26	7.20	223.0	285.0	9.06
C232AHL	C2162H		57.15									13.84

输送链
Conveyor Chains

曳引链
Leaf Chains

传动链
Driving Chains

键槽和螺纹
Keyway And Thread

A系列滚子链轮
Sprocket - A-Series

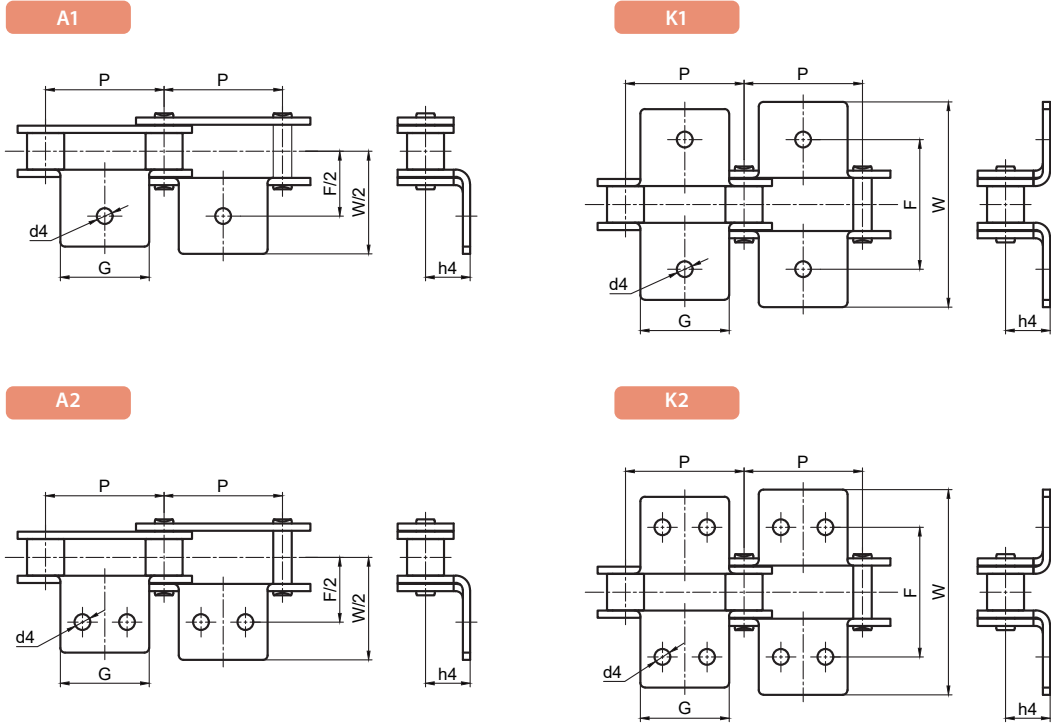
B系列滚子链轮
Sprocket - B-Series

双节距链轮
Double Pitch Sprocket

双驱链轮
Double-Drive Sprocket

同步带轮
Synchronous Pulley

双节距带附件输送链 Double Pitch Conveyor Chain With Attachment



ISO 链号 Chain No.	征和链号 CHOHO Chain No.	P	G	L	F	W	h4	d4 min
		mm	mm	mm	mm	mm	mm	mm
C208A	C2040	25.40	19.1	9.5	25.4	39.6	9.1	3.4
C208AL	C2042							
C210A	C2050	31.75	23.8	11.9	31.8	49	11.1	5.5
C210AL	C2052							
C212A	C2060	38.10	28.6	14.3	42.9	67.8	14.7	5.5
C212AL	C2062							
C212AH	C2060H	38.10	28.6	14.3	42.9	67.8	14.7	5.5
C212AHL	C2062H							
C216A	C2080	50.80	38.1	19.1	55.6	87.8	19.1	6.8
C216AL	C2082							
C216AH	C2080H	50.80	38.1	19.1	55.6	87.8	19.1	6.8
C216AHL	C2082H							
C220A	C2100	63.50	47.6	23.8	66.6	107.5	23.4	9.2
C220AL	C2102							
C220AH	C2100H	63.50	47.6	23.8	66.6	107.5	23.4	9.2
C220AHL	C2102H							
C224A	C2120	76.20	57.2	28.6	79.3	121.4	27.8	11
C224AL	C2122							
C224AH	C2120H	76.20	57.2	28.6	79.3	121.4	27.8	11
C224AHL	C2122H							
C232A	C2160	101.60	76.2	38.1	104.7	151.6	36.5	13.1
C232AL	C2162							
C232AH	C2160H	101.60	76.2	38.1	104.7	151.6	36.5	13.1
C232AHL	C2162H							

输送链
Conveyor Chains

曳引链
Leaf Chains

传动链
Driving Chains

键槽和螺纹
Keyway And Thread

A 系列滚子链轮
Sprocket - A Series

B 系列滚子链轮
Sprocket - B Series

双节距链轮
Double Pitch Sprocket

双驱链轮
Double-Drive Sprocket

同步带轮
Synchronous Pulley

双节距带附件输送链 Double Pitch Conveyor Chain With Attachment

输送链
Conveyor Chains

曳引链
Leaf Chains

传动链
Driving Chains

键槽和螺纹
Keyway And Thread

A系列滚子链轮
Sprocket - A-Series

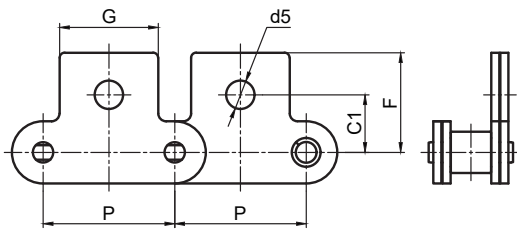
B系列滚子链轮
Sprocket - B-Series

双节距链轮
Double Pitch Sprocket

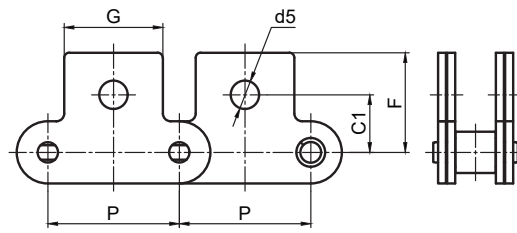
双驱链轮
Double-Drive Sprocket

同步带轮
Synchronous Pulley

SA1

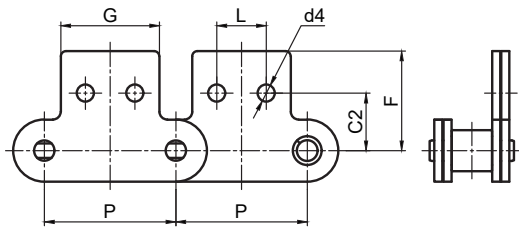


SK1

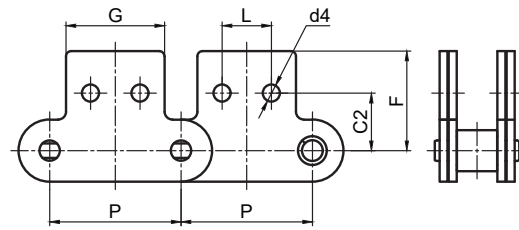


ISO 链号 Chain No.	征和链号 CHOHO Chain No.	P	G	C1	F	d5
		mm	mm	mm	mm	min mm
C208A	C2040	25.40	19.10	11.1	20.5	5.50
C208AL	C2042					
C210A	C2050	31.75	23.80	14.3	25.0	6.60
C210AL	C2052					
C212A	C2060	38.10	28.60	17.5	32.9	9.20
C212AL	C2062					
C212AH	C2060H	38.10	28.60	17.5	32.9	9.20
C212AHL	C2062H					
C216A	C2080	50.80	38.10	22.2	43.5	11.00
C216AL	C2082					
C216AH	C2080H	50.80	38.10	22.2	43.5	11.00
C216AHL	C2082H					
C220A	C2100	63.50	47.60	28.6	50.4	13.00
C220AL	C2102					
C220AH	C2100H	63.50	47.60	28.6	50.4	13.00
C220AHL	C2102H					

SA2



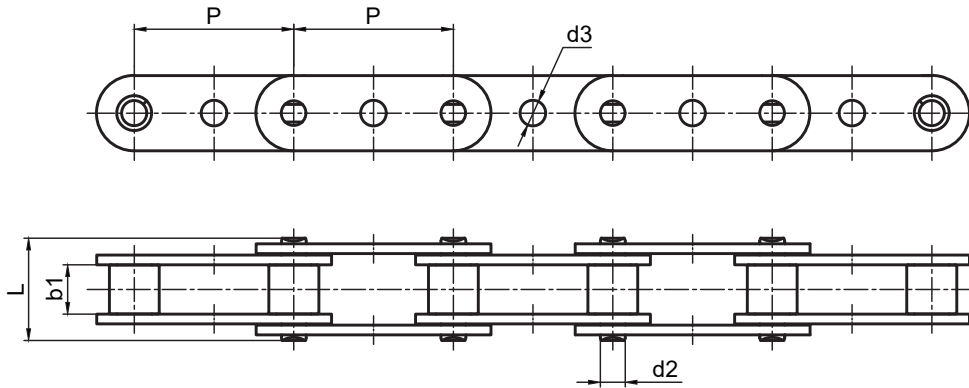
SK2



ISO 链号 Chain No.	征和链号 CHOHO Chain No.	P	G	L	C2	F	d4 min
		mm	mm	mm	mm	mm	mm
C208A	C2040	25.40	19.10	9.50	13.50	20.5	3.4
C208AL	C2042						
C210A	C2050	31.75	23.80	11.90	15.90	25.0	5.5
C210AL	C2052						
C212A	C2060	38.10	28.60	14.30	19.00	32.9	5.5
C212AL	C2062						
C212AH	C2060H	38.10	28.60	14.30	19.00	32.9	5.5
C212AHL	C2062H						
C216A	C2080	50.80	38.10	19.10	25.40	43.5	6.6
C216AL	C2082						
C216AH	C2080H	50.80	38.10	19.10	25.40	43.5	6.6
C216AHL	C2082H						
C220A	C2100	63.50	47.60	23.80	31.80	50.4	8.4
C220AL	C2102						
C220AH	C2100H	63.50	47.60	23.80	31.80	50.4	8.4
C220AHL	C2102H						

双节距带中孔附件输送链 Double Pitch Conveyor Chain With Middle Hole Attachment

GK1



ISO 链号 Chain No.	征和链号 CHOHO Chain No.	P	b1	d2	d3	L
		mm	mm	mm	mm	mm
C208A	C2040	25.40	7.85	3.98	4.1	16.7
C208AL	C2042					
C210A	C2050	31.75	9.40	5.09	6.0	20.7
C210AL	C2052					
C212A	C2060	38.10	12.57	5.96	6.1	26.2
C212AL	C2062					
C212AH	C2060H	38.10	12.57	5.96	6.1	30
C212AHL	C2062H					
C216A	C2080	50.80	15.75	7.94	8.1	33.1
C216AL	C2082					
C216AH	C2080H	50.80	15.75	7.94	8.1	36.8
C216AHL	C2082H					
C220A	C2100	63.50	18.90	9.54	10.1	40.8
C220AL	C2102					
C220AH	C2100H	63.50	18.90	9.54	10.1	44.2
C220AHL	C2102H					

双节距带加长销输送链 Double Pitch Extended Pin Conveyor Chains

输送链
Conveyor Chains

曳引链
Leaf Chains

传动链
Driving Chains

键槽和螺纹
Keyway And Thread

A系列滚子链轮
Sprocket - A-Series

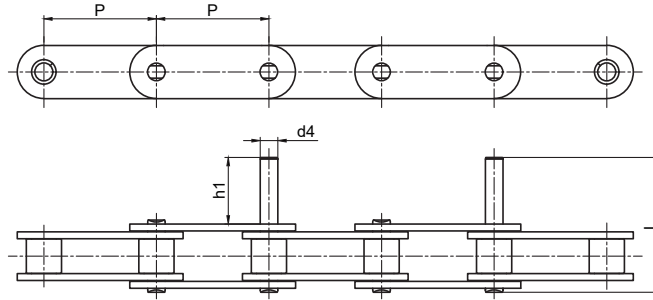
B系列滚子链轮
Sprocket - B-Series

双节距链轮
Double Pitch Sprocket

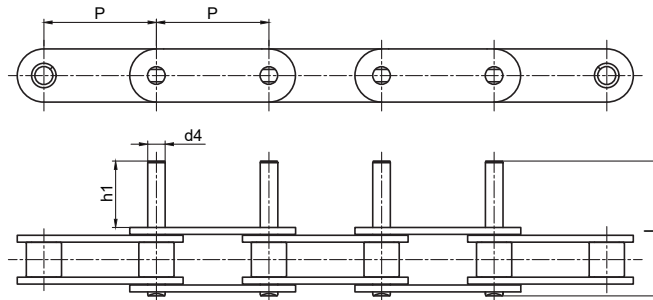
双驱链轮
Double-Drive sprocket

同步带轮
Synchronous Pulley

D1



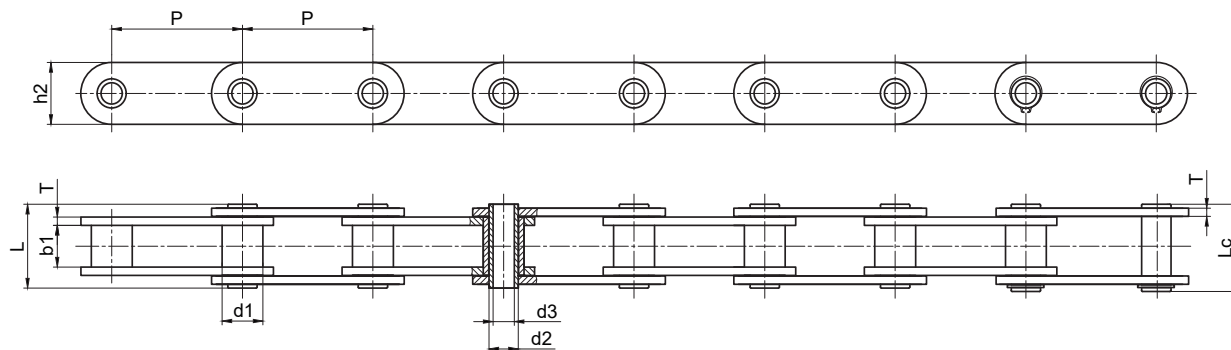
D3



ISO 链号 Chain No.	征和链号 CHOHO Chain No.	节距	销轴直径	加长轴直径	凸出高度	加长轴长度
		Pitch	Pin diameter	Extended pin diameter	Height	Extended pin length
		P	d1 max	d4 max	h1	L
		mm	mm	mm	mm	mm
C208A	C2040	25.40	3.96	3.96	9.5	25.1
C208AL	C2042					
C210A	C2050	31.75	5.08	5.08	11.9	31.3
C210AL	C2052					
C212A	C2060	38.10	5.94	5.94	14.3	38.6
C212AL	C2062					
C212AH	C2060H	38.10	5.94	5.94	14.3	42
C212AHL	C2062H					
C216A	C2080	50.80	7.92	7.92	19.1	50.3
C216AL	C2082					
C216AH	C2080H	50.80	7.92	7.92	19.1	53.5
C216AHL	C2082H					
C220A	C2100	63.50	9.53	9.53	23.8	61.8
C220AL	C2102					
C220AH	C2100H	63.50	9.53	9.53	23.8	65
C220AHL	C2102H					
C224AH	C2120H	76.20	11.10	11.10	28.6	79.6
C224AHL	C2122H					
C232AH	C2160H	101.60	14.27	14.27	38.1	103
C232AHL	C2162H					

注：1. 可定制其它长度的加长销轴链条。2. 可定制不同循环加长销轴链条。

双节距空心销轴输送链 Double Pitch Hollow Pin Conveyor Chain



征和链号 CHOHO Chain No.	节距	套筒 直径	内节内宽	销轴直径		销轴长度		内链板高度	链板厚度	抗拉强度	平均抗拉强度	每米重量
	Pitch	Bush diameter	Width between inner plates	Pin diameter		Pin length		Inner plate depth	Plate thickness	Ultimate tensile strength	Average tensile strength	Weight per meter
	p	d1 max	b1 min	d2 max	d3 min	L max	Lc max	h2 max	T max	Q min	Q ₀	q
	mm	mm	mm	mm	mm	mm	mm	mm	mm	kN	kN	kg/m
C2040HP	25.400	7.95	7.85	5.63	4.00	16.5	17.6	12.00	1.50	11.0	12.60	0.46
C2050HP	31.750	10.16	9.40	7.22	5.09	20.5	21.8	15.00	2.00	20.4	22.80	0.76
C2060HP	38.100	11.91	12.57	8.31	5.96	25.8	26.8	17.00	2.42	24.0	27.10	1.02
C2080HP	50.800	15.88	15.75	11.40	7.94	32.5	33.8	24.00	3.20	50.0	52.00	1.81

输送机
Conveyor Chains

曳引链
Leaf Chains

传动链
Driving Chains

键槽和螺纹
Keyway And Thread

A系列滚子链轮
Sprocket - A Series

B系列滚子链轮
Sprocket - B Series

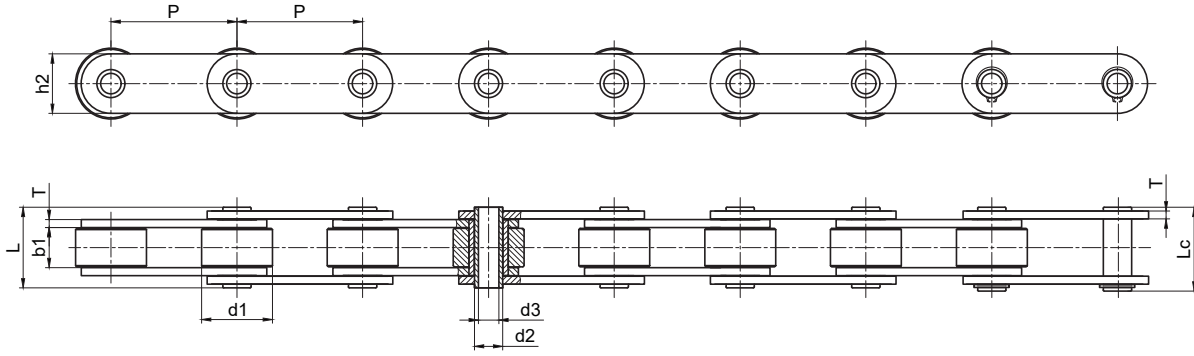
双节距链轮
Double Pitch Sprocket

双驱链轮
Double-Drive Sprocket

同步带轮
Synchronous Pulley

双节距空心销轴输送链 Double Pitch Hollow Pin Conveyor Chain

■ 大滚子型 Large Roller Type



征和链号 CHOHO Chain No.	节距	滚子直径	内节内宽	销轴直径		销轴长度		内链板高度	链板厚度	抗拉强度	平均抗拉强度	每米重量
	Pitch	Roller diameter	Width between inner plates	Pin diameter		Pin length		Inner plate depth	Plate thickness	Ultimate tensile strength	Average tensile strength	Weight per meter
	P	d1 max	b1 min	d2 max	d3 min	L max	Lc max	h2 max	T max	Q min	Q ₀	q
	mm	mm	mm	mm	mm	mm	mm	mm	mm	kN	kN	kg/m
C2042HP	25.400	15.88	7.85	5.63	4.00	16.5	17.6	12.00	1.50	11.0	12.60	0.78
C2052HP	31.750	19.05	9.40	7.22	5.09	20.5	21.8	15.00	2.00	20.4	22.80	0.95
C2062HP	38.100	22.23	12.57	8.31	5.96	25.8	26.8	17.00	2.42	24.0	27.10	1.72
C2082HP	50.800	28.58	15.75	11.40	7.94	32.5	33.8	24.00	3.20	50.0	52.00	2.82