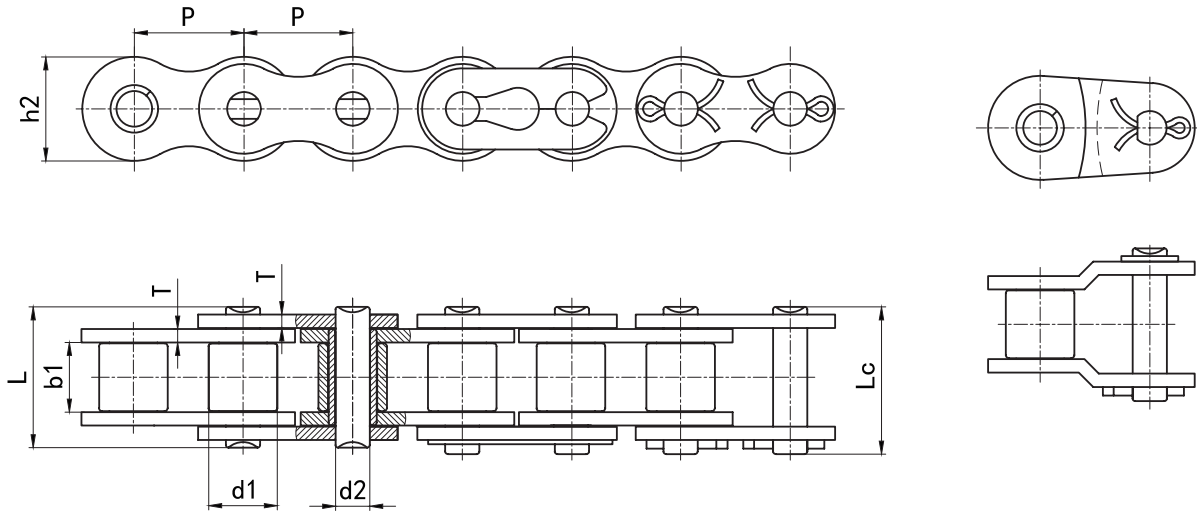


A系列短节距精密滚子链 Short Pitch Precision Roller Chains (A Series)

■ 单排 Simplex



DIN 链号	ISO/ANSI 链号	节距	滚子直径	内节内宽	销轴直径	销轴长度		内链板高度	链板厚度	抗拉强度	平均抗拉强度	每米重量
		Pitch	Roller diameter	Width between inner plates	Pin diameter	Pin length	Inner plate depth	Plate thickness	Ultimate tensile Strength	Average tensile strength	Weight per meter	
DIN Chain No.	ISO/ANSI Chain No.	P mm	d1 max mm	b1 min mm	d2 max mm	L max mm	Lc max mm	h2 max mm	T max mm	Q min kN	Q ₀ kN	q kg/m
*04C-1	*25	6.350	3.30	3.18	2.31	7.9	11.0	5.86	0.80	3.63	4.5	0.14
*06C-1	*35	9.525	5.06	4.70	3.58	12.3	14.17	9.00	1.30	8.0	11.0	0.35
085-1	41	12.700	7.77	6.25	3.60	13.7	15.5	9.91	1.20	6.7	12.3	0.40
08A-1	40	12.700	7.92	7.85	3.98	16.7	18.3	12.07	1.50	13.9	17.9	0.65
10A-1	50	15.875	10.16	9.40	5.09	20.7	23.8	15.09	2.00	21.8	29.3	1.03
12A-1	60	19.050	11.91	12.57	5.96	26.2	28.3	18.10	2.42	31.3	42.0	1.51
16A-1	80	25.400	15.88	15.75	7.94	32.9	36.4	24.13	3.10	55.6	72.3	2.61
20A-1	100	31.750	19.05	18.90	9.54	40.8	44.1	30.17	4.00	87.0	110.5	3.90
24A-1	120	38.100	22.23	25.22	11.11	50.8	54.7	36.20	4.80	125.0	157.0	5.60
28A-1	140	44.450	25.40	25.22	12.71	54.7	61.0	42.23	5.60	170.0	213.2	7.52
32A-1	160	50.800	28.58	31.55	14.29	65.5	70.0	48.26	6.40	223.0	279.0	10.08
36A-1	180	57.150	35.71	35.48	17.46	73.4	79.8	54.30	7.20	281.0	361.1	13.60
40A-1	200	63.500	39.68	37.85	19.85	80.3	87.7	60.33	8.00	347.0	429.0	16.15
48A-1	240	76.200	47.63	47.35	23.81	95.5	104.3	72.39	9.50	500.0	690.0	24.04

注：*套筒链：滚子直径 d1 为套筒直径

输送机
Conveyor Chains

曳引链
Leaf Chains

传动链
Driving Chains

键槽和螺纹
Keyway And Thread

A系列滚子链轮
Sprocket - A-Series

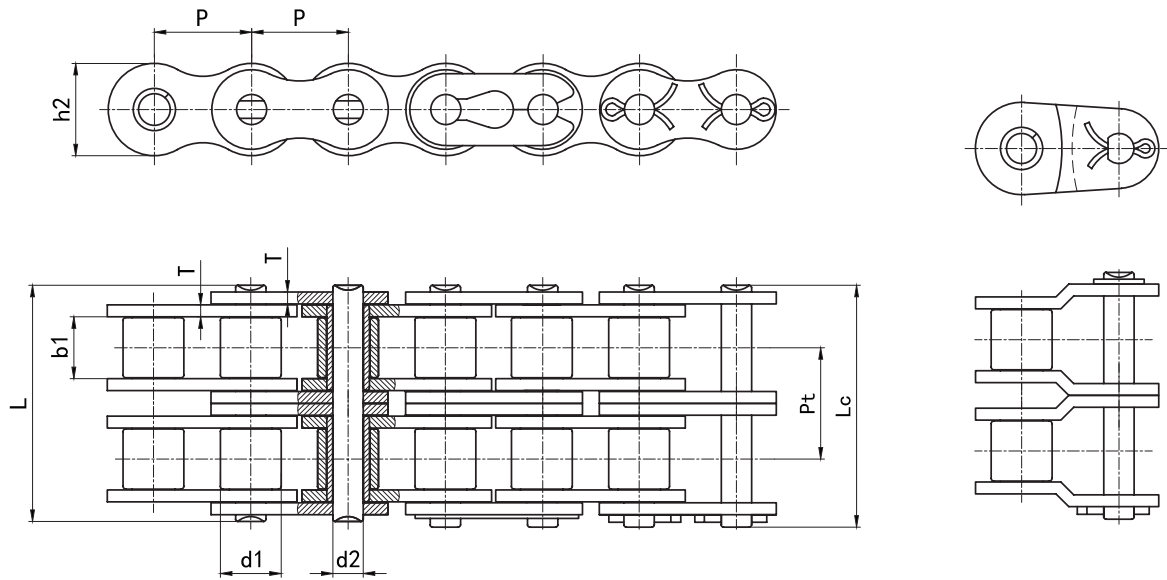
B系列滚子链轮
Sprocket - B-Series

双节距链轮
Double Pitch Sprocket

双驱动链轮
Double-Drive Sprocket

同步带轮
Synchronous Pulley

■ 双排 Duplex



DIN 链号	ISO/ ANSI 链号	节距	滚子直径	内节内宽	销轴直径	销轴长度		内链板高度	链板厚度	排距	抗拉强度	平均抗拉强度	每米重量
		Pitch	Roller diameter	Width between inner plates	Pin diameter	L	Lc	Inner plate depth	Plate thickness	Transverse pitch	Ultimate tensile strength	Average tensile strength	Weight per meter
DIN Chain No.	ISO/ ANSI Chain No.	P	d1 max	b1 min	d2 max	L max	Lc max	h2 max	T max	Pt	Q min	Q ₀	q
		mm	mm	mm	mm	mm	mm	mm	mm	mm	kN	kN	kg/m
*04C-2	*25-2	6.350	3.30	3.18	2.31	15.5	16.0	5.86	0.80	6.40	7.0	8.8	0.27
*06C-2	*35-2	9.525	5.06	4.70	3.58	22.3	24.3	9.00	1.30	10.13	15.8	19.5	0.61
08A-2	40-2	12.700	7.92	7.85	3.98	31.2	33.3	12.07	1.50	14.38	27.8	35.7	1.15
10A-2	50-2	15.875	10.16	9.40	5.09	39.1	40.6	15.09	2.00	18.11	43.6	58.0	2.00
12A-2	60-2	19.050	11.91	12.57	5.96	49.1	50.8	18.10	2.42	22.78	62.6	82.4	2.94
16A-2	80-2	25.400	15.88	15.75	7.94	62.1	65.5	24.13	3.10	29.29	111.2	142.0	5.45
20A-2	100-2	31.750	19.05	18.90	9.54	76.6	80.5	30.17	4.00	35.76	174.0	219.9	7.80
24A-2	120-2	38.100	22.23	25.22	11.11	96.3	100.2	36.20	4.80	45.44	250.0	314.8	11.63
28A-2	140-2	44.450	25.40	25.22	12.71	103.6	110.1	42.23	5.60	48.87	340.0	427.9	15.21
32A-2	160-2	50.800	28.58	31.55	14.29	124.1	128.6	48.26	6.40	58.55	446.0	561.8	20.25
36A-2	180-2	57.150	35.71	35.48	17.46	138.9	145.3	54.30	7.20	65.84	562.0	722.2	26.94
40A-2	200-2	63.500	39.68	37.85	19.85	151.9	159.3	60.33	8.00	71.55	694.0	875.0	32.24
48A-2	240-2	76.200	47.63	47.35	23.81	183.4	192.1	72.39	9.50	87.83	1000.0	1380.0	47.50

注: *套筒链: 滚子直径 d1 为套筒直径

输送机
Conveyor Chains

曳引链
Leaf Chains

传动链
Driving Chains

键槽和螺纹
Keyway And Thread

A 系列滚子链轮
Sprocket - A Series

B 系列滚子链轮
Sprocket - B Series

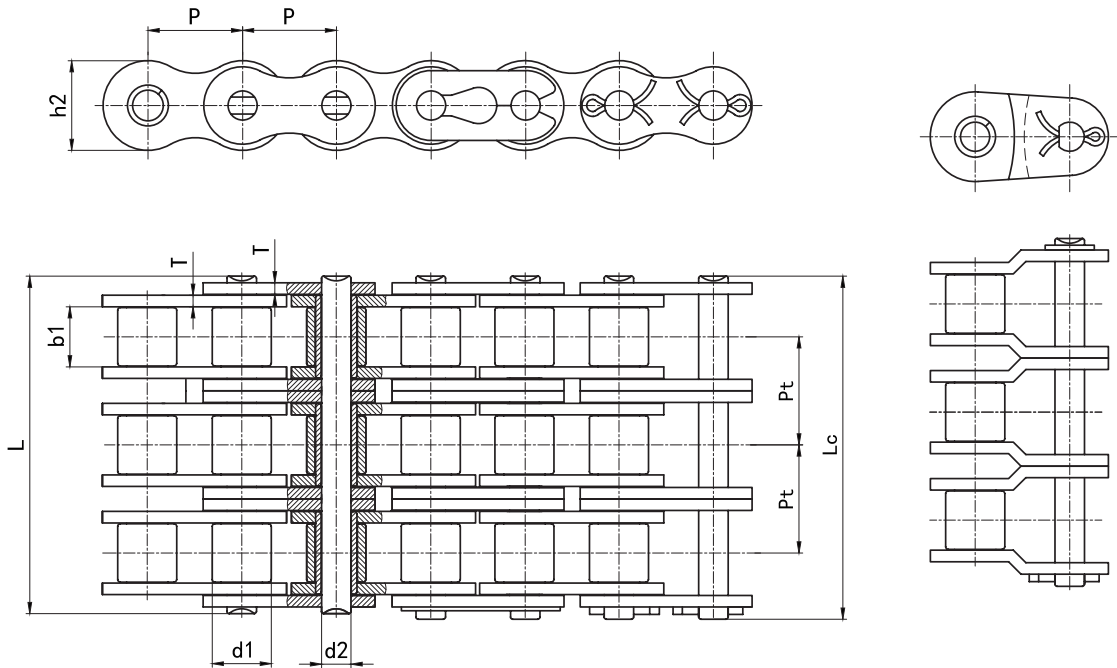
双节距链轮
Double Pitch Sprocket

双驱动链轮
Double-Drive Sprocket

同步带轮
Synchronous Pulley

A系列短节距精密滚子链 Short Pitch Precision Roller Chains (A Series)

■ 三排 Triplex



DIN 链号	ISO/ ANSI 链号	节距	滚子直径	内节内宽	销轴直径	销轴长度		内链板高度	链板厚度	排距	抗拉强度	平均抗拉 强度	每米重量
		Pitch	Roller diameter	Width between inner plates	Pin diameter	Pin length	Inner plate depth	Plate thickness	Transverse pitch	Ultimate tensile strength	Average tensile strength	Weight per meter	
DIN Chain No.	ISO/ ANSI Chain No.	p	d1 max	b1 min	d2 max	L max	Lc max	h2 max	T max	Pt	Q min	Q ₀	q
		mm	mm	mm	mm	mm	mm	mm	mm	mm	kN	kN	kg/m
*04C-3	*25-3	6.350	3.30	3.18	2.31	21.0	21.5	5.86	0.80	6.40	10.5	12.6	0.44
*06C-3	*35-3	9.525	5.06	4.70	3.58	32.6	33.5	9.00	1.30	10.13	23.7	28.6	1.05
08A-3	40-3	12.700	7.92	7.85	3.98	45.5	47.1	12.07	1.50	14.38	41.7	50.0	1.90
10A-3	50-3	15.875	10.16	9.40	5.09	56.9	58.3	15.09	2.00	18.11	65.4	77.8	3.05
12A-3	60-3	19.050	11.91	12.57	5.96	71.8	73.6	18.10	2.42	22.78	93.9	112.0	4.54
16A-3	80-3	25.400	15.88	15.75	7.94	91.8	95.1	24.13	3.10	29.29	166.8	199.0	7.89
20A-3	100-3	31.750	19.05	18.90	9.54	112.1	116.7	30.17	4.00	35.76	261.0	310.0	11.80
24A-3	120-3	38.100	22.23	25.22	11.11	141.3	145.2	36.20	4.80	45.44	375.0	439.0	17.53
28A-3	140-3	44.450	25.40	25.22	12.71	152.0	157.9	42.23	5.60	48.87	510.0	596.0	22.20
32A-3	160-3	50.800	28.58	31.55	14.29	181.8	186.3	48.26	6.40	58.55	669.0	782.0	30.12
36A-3	180-3	57.150	35.71	35.48	17.46	204.4	210.8	54.30	7.20	65.84	843.0	1083.3	40.28
40A-3	200-3	63.500	39.68	37.85	19.85	223.5	230.9	60.33	8.00	71.55	1041.0	1220.0	49.03
48A-3	240-3	76.200	47.63	47.35	23.81	271.3	279.9	72.39	9.50	87.83	1500.0	2070.0	71.06

注：* 套筒链：滚子直径 d1 为套筒直径

输送机
Conveyor Chains

曳引链
Leaf Chains

传动链
Driving Chains

键槽和螺纹
Keyway And Thread

A系列滚子链轮
Sprocket - A-Series

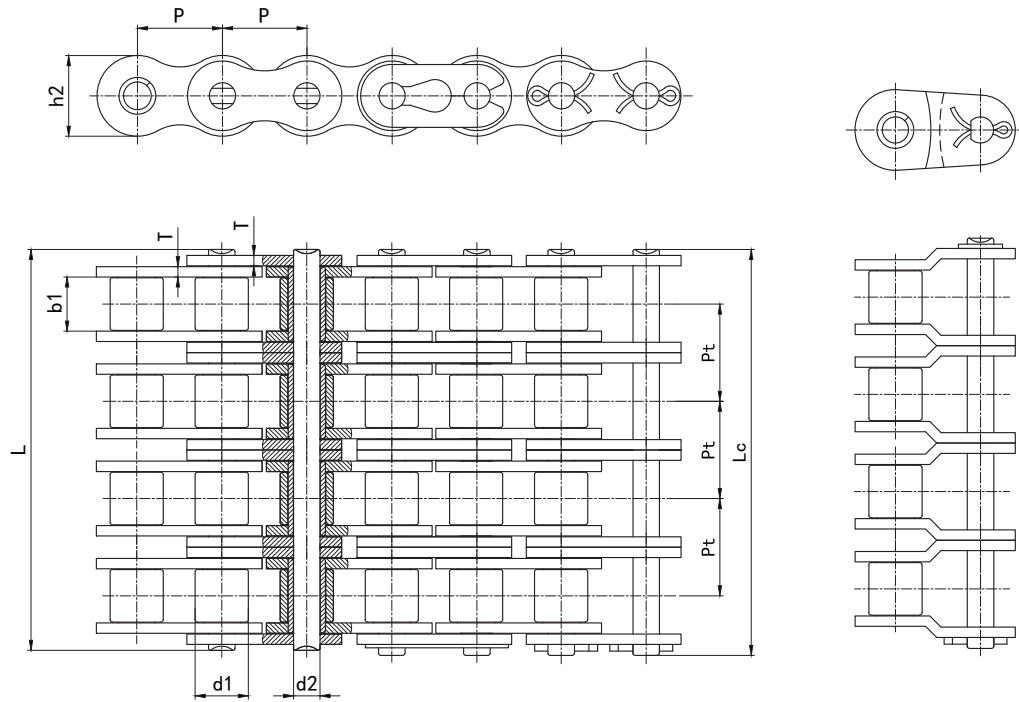
B系列滚子链轮
Sprocket - B-Series

双节距链轮
Double Pitch Sprocket

双驱动链轮
Double-Drive Sprocket

同步带轮
Synchronous Pulley

■ 四排 Fourplex



DIN 链号	ISO/ ANSI 链号	节距	滚子直径	内节内宽	销轴直径	销轴长度		内链板高度	链板厚度	排距	抗拉强度	平均抗拉 强度	每米重量
		Pitch	Roller diameter	Width between inner plates	Pin diameter	Pin length	Inner plate depth	Plate thickness	Transverse pitch	Ultimate tensile strength	Average tensile strength	Weight per meter	
DIN Chain No.	ISO/ ANSI Chain No.	P	d1 max	b1 min	d2 max	L max	Lc max	h2 max	T max	Pt	Q min	Q ₀	q
		mm	mm	mm	mm	mm	mm	mm	mm	mm	kN	kN	kg/m
08A-4	40-4	12.700	7.92	7.85	3.98	60.0	62.2	12.07	1.50	14.38	56.4	67.0	2.43
10A-4	50-4	15.875	10.16	9.40	5.09	75.1	78.1	15.09	2.00	18.11	88.8	110.0	3.91
12A-4	60-4	19.050	11.91	12.57	5.96	94.4	96.6	18.10	2.42	22.78	125.2	150.0	5.85
16A-4	80-4	25.400	15.88	15.75	7.94	120.6	124.0	24.13	3.10	29.29	226.8	270.0	9.98
20A-4	100-4	31.750	19.05	18.90	9.54	148.2	151.5	30.17	4.00	35.76	348.0	420.0	15.34
24A-4	120-4	38.100	22.23	25.22	11.11	187.0	190.9	36.20	4.80	45.44	508.0	590.0	22.29

输送机
Conveyor Chains

曳引链
Leaf Chains

传动链
Driving Chains

键槽和螺纹
Keyway And Thread

A系列滚子链轮
Sprocket - A Series

B系列滚子链轮
Sprocket - B Series

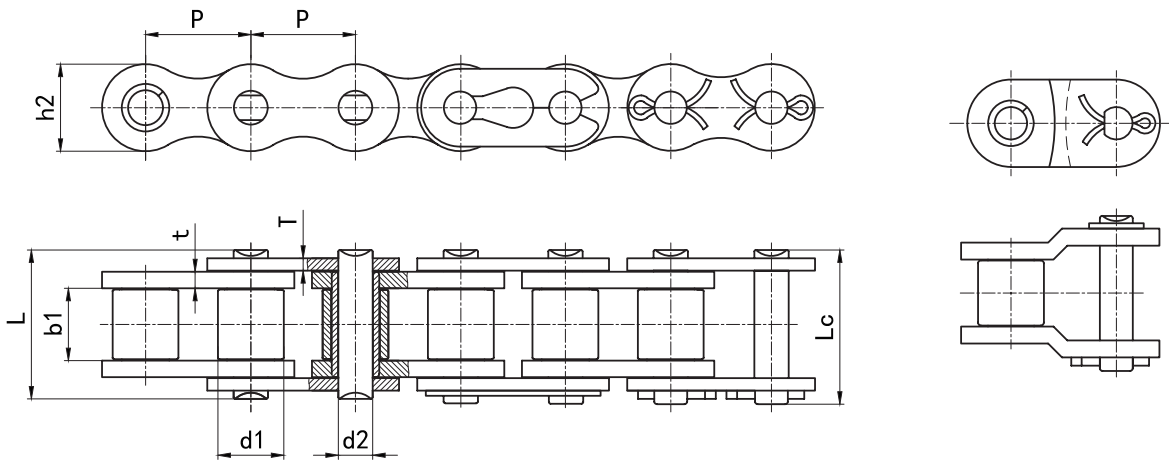
双节距链轮
Double Pitch Sprocket

双驱链轮
Double-Drive Sprocket

同步带轮
Synchronous Pulley

B系列短节距精密滚子链 Short Pitch Precision Roller Chains (B Series)

■ 单排 Simplex



ISO/DIN 链号	节距	滚子直径	内节内宽	销轴直径	销轴长度		内链板高度	链板厚度	抗拉强度	平均抗拉强度	每米重量
	Pitch	Roller diameter	Width between inner plates	Pin diameter	L max	Lc max	Inner plate depth	Plate thickness	Ultimate tensile strength	Average tensile strength	Weight per meter
ISO/DIN Chain No.	P	d1 max	b1 min	d2 max	L max	Lc max	h2 max	t/T max	Q min	Q ₀	q
	mm	mm	mm	mm	mm	mm	mm	mm	kN	kN	kg/m
04B-1	6.000	4.00	2.80	1.85	7.4	7.8	5.00	0.70	3.0	3.5	0.14
05B-1	8.000	5.00	3.00	2.31	8.2	9.2	7.11	0.80	4.4	6.4	0.17
*06B-1	9.525	6.35	5.72	3.28	13.1	14.1	8.20	1.30	8.9	10.8	0.42
08B-1	12.700	8.51	7.75	4.45	17.0	19.2	11.81	1.60	17.8	19.8	0.71
10B-1	15.875	10.16	9.65	5.08	19.6	22.3	14.73	1.70	22.2	27.5	0.93
12B-1	19.050	12.07	11.68	5.72	22.6	25.0	16.13	1.85	28.9	32.3	1.13
16B-1	25.400	15.88	17.02	8.28	36.1	39.2	21.08	4.0/3.0	60.0	72.5	2.72
20B-1	31.750	19.05	19.56	10.19	41.4	46.5	26.42	4.5/3.5	95.0	106.0	3.72
24B-1	38.100	25.40	25.40	14.63	53.4	59.9	33.40	6.0/4.8	160.0	178.3	7.10
28B-1	44.450	27.94	30.99	15.90	65.1	71.5	37.08	7.5/6.0	200.0	220.0	8.50
32B-1	50.800	29.21	30.99	17.81	66.8	72.5	42.29	7.0/6.0	250.0	270.0	10.25
40B-1	63.500	39.37	38.10	22.89	82.2	87.5	52.96	8.5/8.0	355.0	392.0	16.35
48B-1	76.200	48.26	45.72	29.24	99.1	108.8	63.88	12.0/10.0	560.0	625.0	25.07
56B-1	88.900	53.98	53.34	34.32	114.6	126.0	77.85	13.5/12.0	850.0	940.0	35.90
64B-1	101.600	63.50	60.96	39.40	130.9	143.4	90.17	15.0/13.0	1120.0	1240.0	46.20
72B-1	114.300	72.39	68.58	44.48	147.4	161.7	103.63	17.0/15.0	1400.0	1550.0	61.00

注: *直链板

输送机
Conveyor Chains

曳引链
Leaf Chains

传动链
Driving Chains

键槽和螺纹
Keyway And Thread

A系列滚子链轮
Sprocket - A-Series

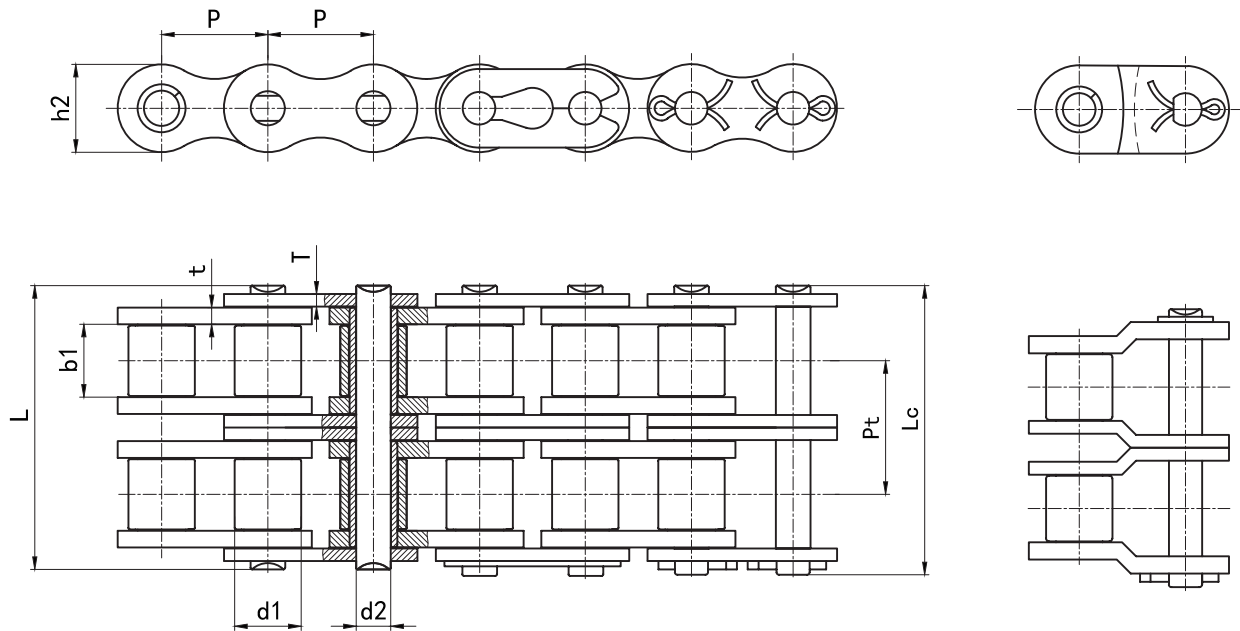
B系列滚子链轮
Sprocket - B-Series

双节距链轮
Double Pitch Sprocket

双驱动链轮
Double-Drive Sprocket

同步带轮
Synchronous Pulley

■ 双排 Duplex



ISO/DIN 链号	节距	滚子直径	内节内宽	销轴直径	销轴长度		内链板高度	链板厚度	排距	抗拉强度	平均抗拉 强度	每米重量
	Pitch	Roller diameter	Width between inner plates	Pin diameter	Pin length	Pin length	Inner plate depth	Plate thickness	Transverse pitch	Ultimate tensile strength	Average tensile strength	Weight per meter
ISO/DIN Chain No.	P	d1 max	b1 min	d2 max	L max	Lc max	h2 max	t/T max	Pt	Q min	Q ₀	q
	mm	mm	mm	mm	mm	mm	mm	mm	mm	kN	kN	kg/m
05B-2	8.000	5.00	3.00	2.31	13.9	14.5	7.11	0.80	5.64	7.8	10.4	0.36
*06B-2	9.525	6.35	5.72	3.28	23.4	24.4	8.20	1.30	10.24	16.9	18.3	0.79
08B-2	12.700	8.51	7.75	4.45	31.0	32.7	11.81	1.60	13.92	31.1	38.4	1.32
10B-2	15.875	10.16	9.65	5.08	36.2	38.3	14.73	1.70	16.59	44.5	55.0	1.85
12B-2	19.050	12.07	11.68	5.72	42.0	44.4	16.13	1.85	19.46	57.8	66.3	2.31
16B-2	25.400	15.88	17.02	8.28	68.0	71.2	21.08	4.0/3.0	31.88	106.0	133.4	5.41
20B-2	31.750	19.05	19.56	10.19	77.9	83.0	26.42	4.5/3.5	36.45	170.0	210.0	7.21
24B-2	38.100	25.40	25.40	14.63	101.8	108.5	33.40	6.0/4.8	48.36	280.0	318.1	13.40
28B-2	44.450	27.94	30.99	15.90	124.7	130.8	37.08	7.5/6.0	59.56	360.0	430.0	16.60
32B-2	50.800	29.21	30.99	17.81	125.3	131.2	42.29	7.0/6.0	58.55	450.0	520.0	21.00
40B-2	63.500	39.37	38.10	22.89	153.7	159.2	52.96	8.5/8.0	72.29	630.0	710.0	32.00
48B-2	76.200	48.26	45.72	29.24	190.4	200.0	63.88	12.0/10.0	91.21	1000.0	1130.0	48.68
56B-2	88.900	53.98	53.34	34.32	221.2	232.5	77.85	13.5/12.0	106.60	1600.0	1760.0	71.50
64B-2	101.600	63.50	60.96	39.40	250.8	263.3	90.17	15.0/13.0	119.89	2000.0	2200.0	91.50
72B-2	114.300	72.39	68.58	44.48	283.7	298.0	103.63	17.0/15.0	136.27	2500.0	2750.0	120.60

注: *直链板

输送机
Conveyor Chains

曳引链
Leaf Chains

传动链
Driving Chains

键槽和螺纹
Keyway And Thread

A系列滚子链轮
Sprocket - A Series

B系列滚子链轮
Sprocket - B Series

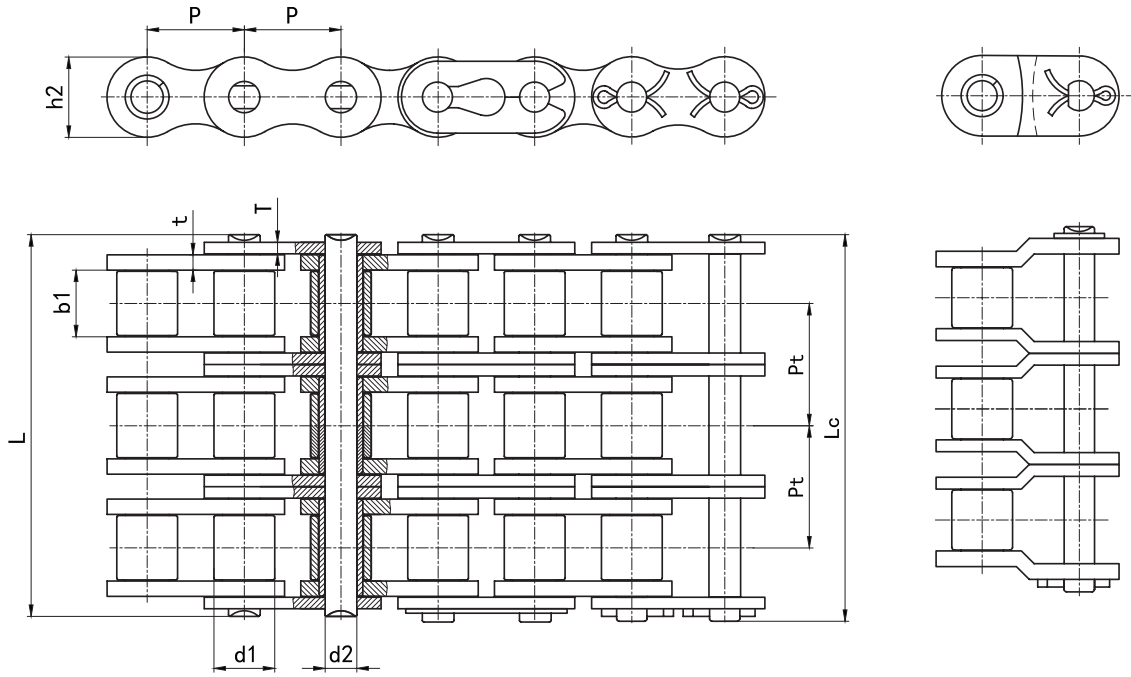
双节距链轮
Double Pitch Sprocket

双驱链轮
Double-Drive Sprocket

同步带轮
Synchronous Pulley

B系列短节距精密滚子链 Short Pitch Precision Roller Chains (B Series)

■ 三排 Triplex



ISO/DIN 链号	节距	滚子直径	内节内宽	销轴直径	销轴长度		内链板高度	链板厚度	排距	抗拉强度	平均抗拉强度	每米重量
	Pitch	Roller diameter	Width between inner plates	Pin diameter	Pin length		Inner plate depth	Plate thickness	Transverse pitch	Ultimate tensile strength	Average tensile strength	Weight per meter
ISO/DIN Chain No.	P	d1 max	b1 min	d2 max	L max	Lc max	h2 max	t/T max	Pt	Q min	Q _o	q
	mm	mm	mm	mm	mm	mm	mm	mm	mm	kN	kN	kg/m
05B-3	8.000	5.00	3.00	2.31	19.5	20.2	7.11	0.80	5.64	11.1	13.8	0.48
*06B-3	9.525	6.35	5.72	3.28	33.5	34.6	8.20	1.30	10.24	24.9	30.1	1.16
08B-3	12.700	8.51	7.75	4.45	44.9	47.5	11.81	1.60	13.92	44.5	56.5	2.03
10B-3	15.875	10.16	9.65	5.08	52.8	55.0	14.73	1.70	16.59	66.7	82.5	2.77
12B-3	19.050	12.07	11.68	5.72	61.6	63.7	16.13	1.85	19.46	86.7	101.5	3.46
16B-3	25.400	15.88	17.02	8.28	99.7	102.8	21.08	4.0/3.0	31.88	160.0	195.0	8.13
20B-3	31.750	19.05	19.56	10.19	114.3	119.4	26.42	4.5/3.5	36.45	250.0	287.0	10.82
24B-3	38.100	25.40	25.40	14.63	149.8	156.0	33.40	6.0/4.8	48.36	425.0	490.0	20.10
28B-3	44.450	27.94	30.99	15.90	184.3	190.3	37.08	7.5/6.0	59.56	530.0	660.0	24.90
32B-3	50.800	29.21	30.99	17.81	183.6	189.3	42.29	7.0/6.0	58.55	670.0	770.0	31.56
40B-3	63.500	39.37	38.10	22.89	225.6	231.2	52.96	8.5/8.0	72.29	950.0	1090.0	48.10
48B-3	76.200	48.26	45.72	29.24	281.6	291.2	63.88	12.0/10.0	91.21	1500.0	1710.0	75.20
56B-3	88.900	53.98	53.34	34.32	327.8	339.1	77.85	13.5/12.0	106.60	2240.0	2464.0	107.40
64B-3	101.600	63.50	60.96	39.40	370.7	383.2	90.17	15.0/13.0	119.89	3000.0	3300.0	136.30
72B-3	114.300	72.39	68.58	44.48	420.0	434.3	103.63	17.0/15.0	136.27	3750.0	4125.0	180.30

注: *直链板

输送机
Conveyor Chains

曳引链
Leaf Chains

传动链
Driving Chains

键槽和螺纹
Keyway And Thread

A系列滚子链轮
Sprocket - A-Series

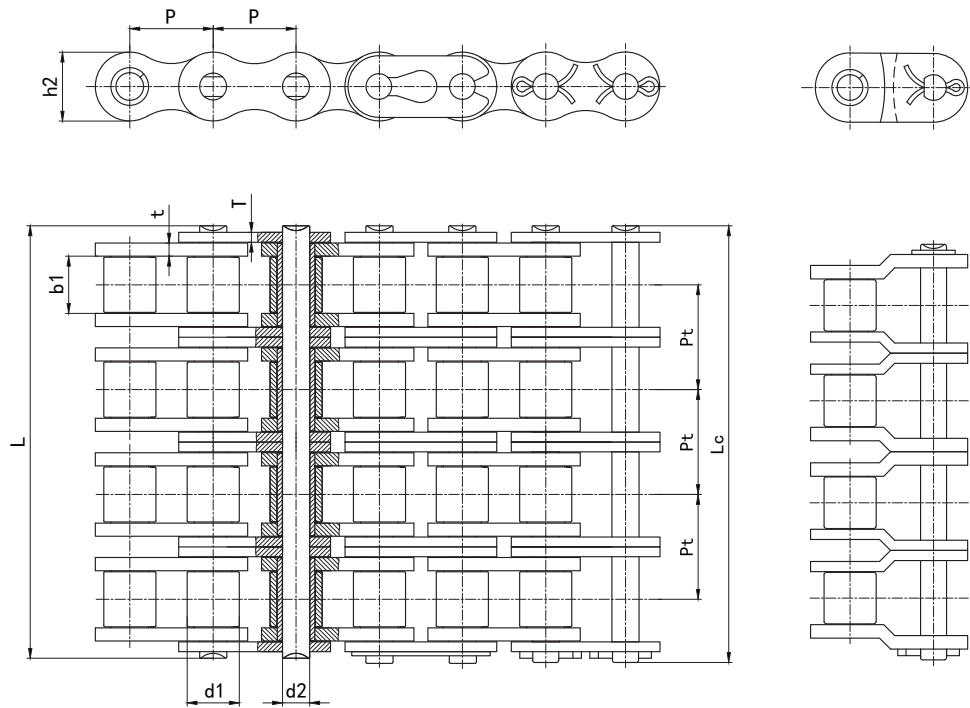
B系列滚子链轮
Sprocket - B-Series

双节距链轮
Double Pitch Sprocket

双驱动链轮
Double-Drive Sprocket

同步带轮
Synchronous Pulley

■ 四排 Fourplex



ISO/DIN 链号	节距	滚子直径	内节内宽	销轴直径	销轴长度		内链板高度	链板厚度	排距	抗拉强度	平均抗拉强度	每米重量
	Pitch	Roller diameter	Width between inner plates	Pin diameter	Pin length		Inner plate depth	Plate thickness	Transverse pitch	Ultimate tensile strength	Average tensile strength	Weight per meter
ISO/DIN Chain No.	P	d1 max	b1 min	d2 max	L max	Lc max	h2 max	t/T max	Pt	Q min	Q ₀	q
	mm	mm	mm	mm	mm	mm	mm	mm	mm	kN	kN	kg/m
08B-4	12.700	8.51	7.75	4.45	59.5	61.7	11.81	1.60	13.92	71.2	76.0	2.60
10B-4	15.875	10.16	9.65	5.08	69.8	72.4	14.73	1.70	16.59	88.8	105.0	3.73
12B-4	19.050	12.07	11.68	5.72	80.6	83.1	16.13	1.85	19.46	116.0	125.0	4.57
16B-4	25.400	15.88	17.02	8.28	131.7	134.9	21.08	4.0/3.0	31.88	240.0	310.0	10.56
20B-4	31.750	19.05	19.56	10.19	150.8	155.6	26.42	4.5/3.5	36.45	380.0	400.0	13.81
24B-4	38.100	25.40	25.40	14.63	197.4	203.8	33.40	6.0/4.8	48.36	640.0	700.0	25.50

输送机
Conveyor Chains

曳引链
Leaf Chains

传动链
Driving Chains

键槽和螺纹
Keyway And Thread

A系列滚子链轮
Sprocket - A Series

B系列滚子链轮
Sprocket - B Series

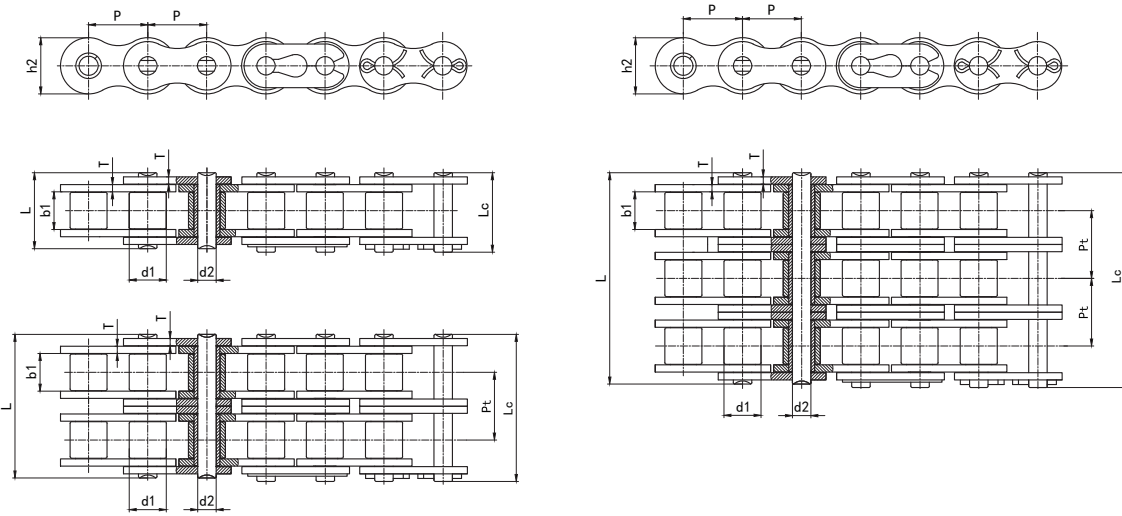
双节距链轮
Double Pitch Sprocket

双驱动链轮
Double-Drive Sprocket

同步带轮
Synchronous Pulley

A系列加重型滚子链 Heavy Duty Series Roller Chains (A Series)

■ 单排、双排、三排 Simplex / Duplex / Triplex



DIN 链号	ISO/ANSI 链号	节距	滚子直径	内节内宽	销轴直径	销轴长度		内链板高度	链板厚度	排距	抗拉强度	平均抗拉强度	每米重量
		Pitch	Roller diameter	Width between inner plates	Pin diameter	Pin length		Inner plate depth	Plate thickness	Transverse pitch	Ultimate tensile strength	Average tensile strength	Weight per meter
DIN Chain No.	ISO/ANSI Chain No.	p	d1 max	b1 min	d2 max	L max	Lc max	h2 max	T max	Pt	Q min	Q ₀	q
		mm	mm	mm	mm	mm	mm	mm	mm	mm	kN	kN	kg/m
08AH-1	40H-1	12.700	7.92	7.85	3.98	18.8	20.0	12.07	2.00	/	13.9	19.2	0.82
10AH-1	50H-1	15.875	10.16	9.40	5.09	22.1	23.9	15.09	2.42	/	21.8	30.1	1.25
12AH-1	60H-1	19.050	11.91	12.57	5.96	30.0	32.3	18.10	3.20	/	31.3	42.0	1.89
16AH-1	80H-1	25.400	15.88	15.75	7.94	36.8	40.5	24.13	4.00	/	55.6	72.0	3.10
20AH-1	100H-1	31.750	19.05	18.90	9.54	44.2	47.6	30.17	4.80	/	87.0	112.0	4.50
24AH-1	120H-1	38.100	22.23	25.22	11.11	54.5	58.2	36.20	5.60	/	125.0	160.0	6.60
28AH-1	140H-1	44.450	25.40	25.22	12.71	58.2	64.5	42.23	6.40	/	170.0	217.5	8.30
32AH-1	160H-1	50.800	28.58	31.55	14.29	68.9	73.4	48.26	7.20	/	223.0	285.0	10.30
40AH-1	200H-1	63.500	39.68	37.85	19.85	87.1	94.2	60.33	9.50	/	347.0	445.0	19.16
48AH-1	240H-1	76.200	47.63	47.35	23.81	111.4	120.1	72.39	12.70	/	500.0	690.0	30.60
12AH-2	60H-2	19.050	11.91	12.57	5.96	55.9	58.2	18.10	3.20	26.11	62.6	84.5	3.70
16AH-2	80H-2	25.400	15.88	15.75	7.94	69.1	72.8	24.13	4.00	32.59	112.2	145.0	6.15
20AH-2	100H-2	31.750	19.05	18.90	9.54	83.2	86.7	30.17	4.80	39.09	174.0	224.0	9.00
24AH-2	120H-2	38.100	22.23	25.22	11.11	102.9	107.1	36.20	5.60	48.87	250.0	320.0	13.13
28AH-2	140H-2	44.450	25.40	25.22	12.71	110.1	116.4	42.23	6.40	52.20	340.0	437.0	16.60
32AH-2	160H-2	50.800	28.58	31.55	14.29	130.5	135.1	48.26	7.20	61.90	446.0	572.0	20.20
40AH-2	200H-2	63.500	39.68	37.85	19.85	165.4	172.5	60.33	9.50	78.31	694.0	894.9	38.11
48AH-2	240H-2	76.200	47.63	47.35	23.81	212.6	221.3	72.39	12.70	101.2	1000.0	1380.0	60.70
12AH-3	60H-3	19.050	11.91	12.57	5.96	81.9	83.9	18.10	3.20	26.11	93.9	115.0	5.52
16AH-3	80H-3	25.400	15.88	15.75	7.94	101.8	105.5	24.13	4.00	32.59	166.8	205.0	9.42
20AH-3	100H-3	31.750	19.05	18.90	9.54	122.3	125.8	30.17	4.80	39.09	261.0	315.0	12.96
24AH-3	120H-3	38.100	22.23	25.22	11.11	151.7	155.9	36.20	5.60	48.87	375.0	446.0	19.64
28AH-3	140H-3	44.450	25.40	25.22	12.71	162.0	168.3	42.23	6.40	52.20	510.0	598.5	24.90
32AH-3	160H-3	50.800	28.58	31.55	14.29	192.1	196.4	48.26	7.20	61.90	669.0	787.5	30.10
40AH-3	200H-3	63.500	39.68	37.85	19.85	243.7	250.8	60.33	9.50	78.31	1041.0	1228.0	57.05
48AH-3	240H-3	76.200	47.63	47.35	23.81	313.8	322.5	72.39	12.70	101.2	1500.0	2070.0	91.20

输送机链
Conveyor Chains

曳引链
Leaf Chains

传动链
Driving Chains

键槽和螺纹
Keyway And Thread

A系列滚子链轮
Sprocket - A-Series

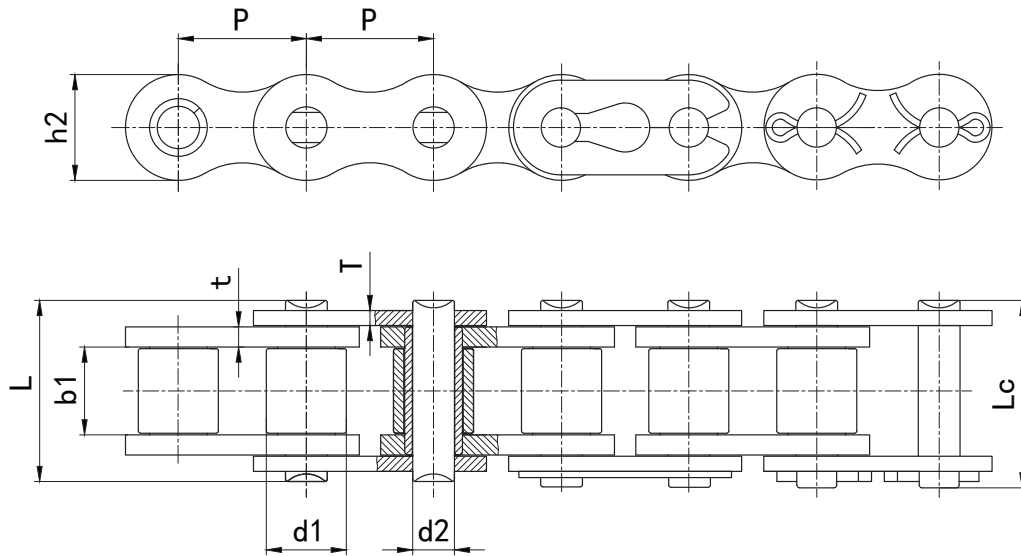
B系列滚子链轮
Sprocket - B-Series

双节距链轮
Double Pitch Sprocket

双驱动链轮
Double-Drive Sprocket

同步带轮
Synchronous Pulley

B系列加重型滚子链 Heavy Duty Series Roller Chains (B Series)



征和链号 CHOHO Chain No.	节距	滚子直径	内节内宽	销轴直径	销轴长度		内链板高度	链板厚度	抗拉强度	平均抗拉强度	每米重量
	Pitch	Roller diameter	Width between inner plates	Pin diameter	Pin length		Inner plate depth	Plate thickness	Ultimate tensile strength	Average tensile strength	Weight per meter
	P	d1 max	b1 min	d2 max	L max	Lc max	h2 max	t/T max	Q min	Q ₀	q
	mm	mm	mm	mm	mm	mm	mm	mm	kN	kN	kg/m
08BH-1	12.700	8.51	7.75	4.45	18.8	20.0	11.81	2.00	17.8	20.6	0.79
10BH-1	15.875	10.16	9.65	5.08	20.2	21.6	14.73	1.85	22.2	25.0	1.03
12BH-1	19.050	12.07	11.68	6.10	25.2	26.8	18.10	2.42	28.9	40.0	1.50
16BH-1	25.400	15.88	17.02	8.90	36.0	38.9	24.10	4.0/3.0	60.0	80.0	3.11
20BH-1	31.750	19.05	19.56	10.19	48.3	52.0	26.40	6.0/4.8	95.0	110.0	6.10
24BH-1	38.100	25.40	25.40	14.63	58.6	63.4	36.20	7.5/6.0	160.0	225.0	9.00

输送机
Conveyor Chains

曳引链
Leaf Chains

传动链
Driving Chains

键槽和螺纹
Keyway And Thread

A系列滚子链轮
Sprocket - A Series

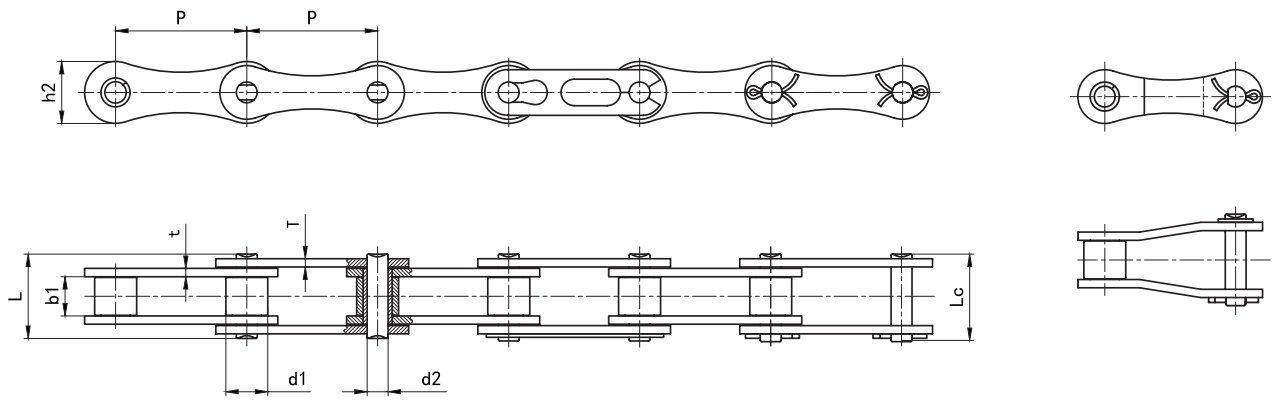
B系列滚子链轮
Sprocket - B Series

双节距链轮
Double Pitch Sprocket

双驱链轮
Double-Drive Sprocket

同步带轮
Synchronous Pulley

双节距精密滚子链 Double Pitch Precision Roller Chains



ISO/DIN 链号	ANSI 链号	节距	滚子直径	内节内宽	销轴直径	销轴长度		内链板高度	链板厚度	抗拉强度	平均抗拉强度	每米重量
		Pitch	Roller diameter	Width between inner plates	Pin diameter	Pin length		Inner plate depth	Plate thickness	Ultimate tensile strength	Average tensile strength	Weight per meter
ISO/DIN Chain No.	ANSI Chain No.	P mm	d1 max mm	b1 min mm	d2 max mm	L max mm	Lc max mm	h2 max mm	t/T max mm	Q min kN	Q ₀ kN	q kg/m
208A	2040	25.40	7.92	7.85	3.98	16.7	18.3	12.07	1.50	13.9	17.9	0.42
208B	/	25.40	8.51	7.75	4.45	17.0	19.2	11.81	1.60	17.8	19.8	0.45
210A	2050	31.75	10.16	9.40	5.09	20.7	23.8	15.09	2.00	21.8	29.3	0.72
210B	/	31.75	10.16	9.65	5.08	19.6	22.3	14.73	1.70	22.2	27.5	0.65
212A	2060	38.10	11.91	12.57	5.96	26.2	28.3	18.10	2.42	31.3	42.0	1.02
212B	/	38.10	12.07	11.68	5.72	22.6	25.0	16.13	1.85	28.9	32.3	0.76
216A	2080	50.80	15.88	15.75	7.94	32.9	36.4	24.13	3.10	55.6	72.3	1.70
216B	/	50.80	15.88	17.02	8.28	36.1	39.2	21.08	4.0/3.0	60.0	72.5	1.75
220A	2100	63.50	19.05	18.90	9.54	40.8	44.1	30.17	4.00	87.0	110.5	2.53
220B	/	63.50	19.05	19.56	10.19	41.4	46.5	26.42	4.5/3.5	95.0	106.0	2.62
224A	2120	76.20	22.23	25.22	11.11	50.8	54.7	36.20	4.80	125.0	157.0	4.07
224B	/	76.20	25.40	25.40	14.63	53.4	59.9	33.40	6.0/4.8	160.0	178.3	4.70
228B	/	88.90	27.94	30.99	15.90	65.1	71.5	37.08	7.5/6.0	200.0	220.0	6.25
232B	/	101.60	29.21	30.99	17.81	66.8	72.5	42.29	7.0/6.0	250.0	278.0	6.71

输送机
Conveyor Chains

曳引链
Leaf Chains

传动链
Driving Chains

键槽和螺纹
Keyway And Thread

A系列滚子链轮
Sprocket - A-Series

B系列滚子链轮
Sprocket - B-Series

双节距链轮
Double Pitch Sprocket

双驱动链轮
Double-Drive Sprocket

同步带轮
Synchronous Pulley