

# CHOHO

  
**KING**  
OF RACING CHAIN

*Chain transmission system solutions  
for global motorcycles.*



**CHOHO sponsor FELO-GRESINI,  
2023 MotoE start a new journey!**

**11**  


**2022 MotoGP-MotoE World Champion**  
**Matteo Ferrai #11**

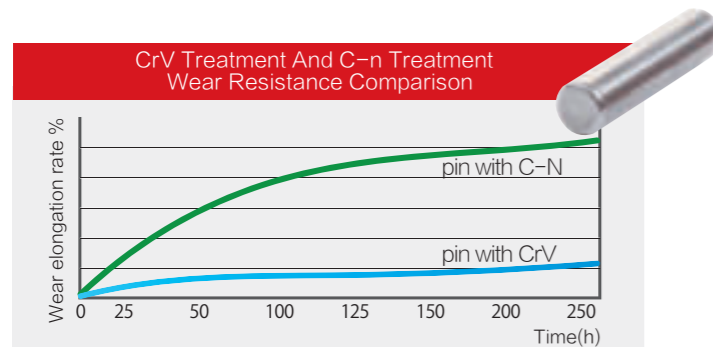
## Chain Advantages

### CrV Treatment Technology

The traditional chain treatment process for the pin shaft adopts the traditional C-N treatment, and the CrV treatment technology and the strengthened pre-tensioning technology of the chain are used to enhance the surface strength of the pin shaft and the fatigue strength of the chain, which greatly improves the durability of the chain.

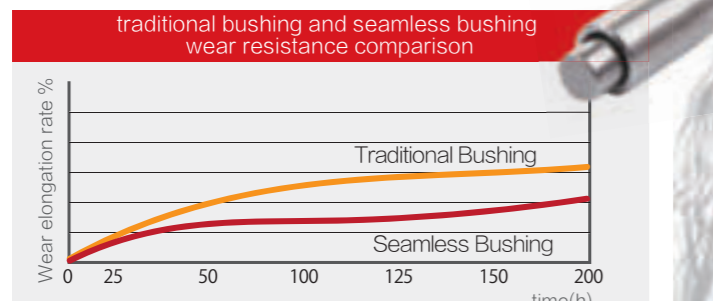


This technology is mainly used in the surface strengthening treatment of the pin shaft, which can make the surface hardness of the pin shaft reach 2200HV, and can improve the wear resistance of the chain by more than 100%



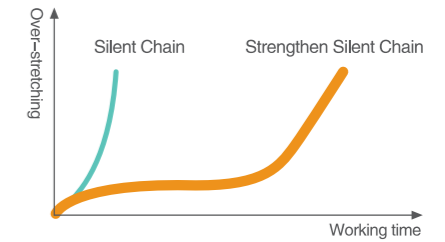
### S25H Solid Bush

Traditional chains mostly use rolled sleeves, S25H introduces cold forging technology, seamless sleeves greatly improve the wear resistance of the chain



## Timing Chain

CHOHO provides three types of timing chains: Strengthen Silent Chain, Silent Chain, Bush Chain. Strengthen Silent Chain has a world-top-level performance through applying special material and technology. All these timing chains are using special chromizing heat treatment and 35CrMo steel, bringing 10-20% improvement on tensile strength and 20-90% improvement on wearing performance.



Chain No.	Pitch (mm)	Number of Plates	Chain Width	Pin Dia	Plate Depth	Distance from Hole Center to Tooth Top	Plate Thickness (t)	Plate Thickness (T)	Pin Length max	Tensile Strength	Weight Per Meter
-----------	------------	------------------	-------------	---------	-------------	--	---------------------	---------------------	----------------	------------------	------------------

### Strengthen Silent Chain

CL04CF5-5	6.35	2x3	3.15	2.51	6.70	3.90	1.0	0.80	6.10	5.50	0.17
CL04CF5-7	6.35	3x4	5.20	2.51	6.70	3.90	1.0	0.80	8.20	9.10	0.24
CL04CF5-9	6.35	4x5	7.25	2.51	6.70	3.90	1.0	0.80	10.30	11.80	0.31

### Silent Chain

82RH-5	6.35	2x3	3.15	2.51	6.72	3.92	1.0	0.8	6.20	5.20	0.17
82RH-7	6.35	3x4	5.20	2.51	6.72	3.92	1.0	0.8	9.00	7.30	0.24
82RH-9	6.35	4x5	7.25	2.51	6.72	3.92	1.0	0.8	11.00	9.30	0.32
CL04CF-5	6.35	2x3	3.15	2.41	6.70	3.90	1.0	0.80	6.1	5.20	0.17
CL04CF-7	6.35	3x4	5.20	2.41	6.70	3.90	1.0	0.80	8.20	7.30	0.24
CL04CF-9	6.35	4x5	7.25	2.41	6.70	3.90	1.0	0.80	10.30	9.30	0.31
CL06CF5-9	9.525	4x5	12.53	4.06	11.25	6.30	1.80	0.80	16.61	33.10	0.91
CL06CF5-13	9.525	6x7	19.69	4.06	11.25	6.30	1.80	0.80	23.95	45.60	1.30

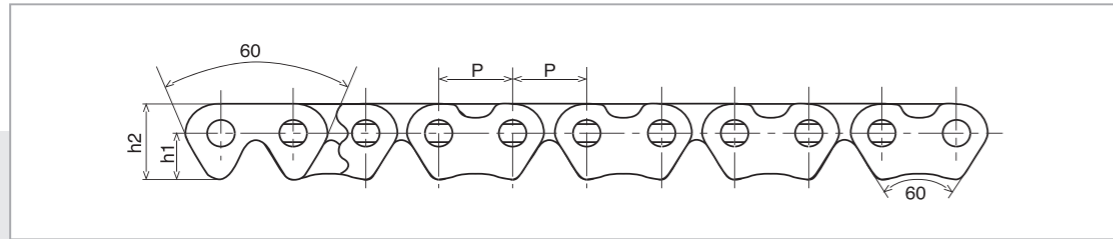
### Bush Chain

25	6.35	/	3.18	2.31	6.00	/	/	/	7.90	3.63	0.15
25H	6.35	/	3.18	2.31	5.90	/	/	/	8.90	5.50	0.17
25HT	6.35	/	3.18	2.31	5.90	/	/	/	9.20	6.20	0.20
25SH	6.35	/	3.18	2.31	5.90	/	/	/	8.90	5.20	0.18
F25H	6.35	/	3.18	2.31	5.90	/	/	/	8.90	5.00	0.21
S25H	6.35	/	3.18	2.31	5.90	/	/	/	8.90	5.50	0.17
219H1	7.77	/	5.00	3.01	7.43	/	/	/	11.50	6.50	0.28
06B*	9.525	/	5.72	3.28	8.20	/	/	/	13.1	8.9	0.442

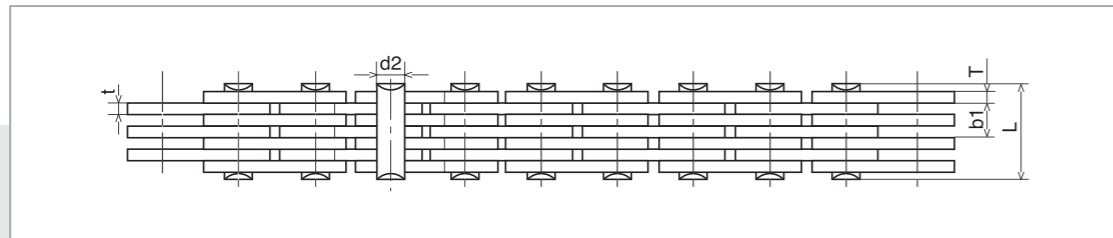
06B\* is roller chain

Timing Chain

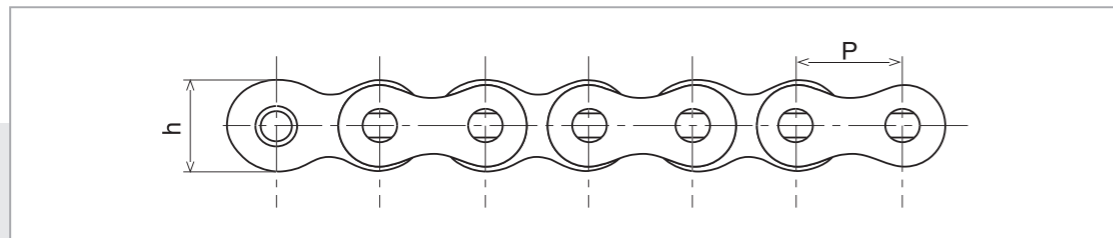
Strengthen Silent Chain



Silent Chain



Bush Chain



Off-road Chain

Off-road Chain

- Lightweight design
- Solid bush
- Pin with infiltration
- Fine alloy material
- High quality grease



Off-road Chain

Chain No.	Pitch (mm)	Width between Inner Plates	Pin Dia	Pin Length	Roller Dia	Plate Thickness Inner	Plate Thickness Outer	Tensile Strength (min)	Tensile Strength (Average)	Connecting Link (Standard)	Connecting Link (Optional)	Application By CC
420D	12.700	6.35	3.96	14.75	7.77	1.8	1.8	21	24	CL/SCL	PL	90-150
520ND	15.875	6.35	5.24	17.90	10.22	2.0	2.0	30	33	CL	EPL	200-450



Roller Chain

Roller Chain

- High quality plates: fine material, shot blasting
- Vacuum oiling: The heightening design of bushing improves the wear resistance by 20% over the standard series
- 32 years of production process, stable and reliable quality
- Best-selling in more than 100 countries, monthly output of more than 2 million pieces



Roller Chain

Chain No.	Pitch (mm)	Width between Inner Plates	Pin Dia	Pin Length	Roller Dia	Plate Thickness Inner	Plate Thickness Outer	Tensile Strength (min)	Tensile Strength (Average)	Connecting Link (Standard)	Connecting Link (Optional)	Application By CC
<b>Standard Series</b>												
420	12.7	6.35	3.96	14.75	7.77	1.5	1.5	16	18	CL/SCL	PL	60-90
428	12.7	7.85	4.46	16.6	8.51	1.60	1.60	17.8	18.8	CL/SCL	PL	90-125
520	15.875	6.35	5.07	17.05	10.16	2.0	2.0	26.5	27.7	CL/SCL	PL	125-160
530	15.875	9.4	5.07	19.6	10.16	2.0	2.0	26.5	28.1	CL/SCL	PL	150-180
415H	12.7	4.8	3.96	13.2	7.77	1.5	1.5	16	18	CL/SCL	PL	50-70
420H	12.7	6.35	3.96	16.1	7.77	1.8	1.8	18	19	CL/SCL	PL	60-110
428H	12.7	7.85	4.46	18.4	8.51	1.96	1.96	20.6	22.2	CL/SCL	PL	100-150
520H	15.875	6.35	5.07	18.8	10.16	2.42	2.42	30.5	31.4	CL/SCL	PL	140-200
525H	15.875	7.9	5.07	20.4	10.16	2.42	2.42	30.5	31.8	CL/SCL	PL	140-250
530H	15.875	9.4	5.07	22.1	10.16	2.42	2.42	30.5	32.1	CL/SCL	PL	140-250
<b>Economic Series</b>												
KF420	12.7	6.35	3.96	14.75	7.77	1.5	1.5	16	17.4	CL/SCL	PL	60-90
KF428	12.7	7.85	4.46	16.1	8.51	1.5	1.5	17.8	18.5	CL/SCL	PL	90-125
KF428HG	12.7	7.85	4.46	17.8	8.51	1.8	1.8	20.6	21.7	CL/SCL	PL	100-125
KF520	15.875	6.35	5.07	17.05	10.16	1.8	1.8	26.5	27.5	CL/SCL	PL	125-200
KF530	15.875	9.4	5.07	19.6	10.16	1.8	1.8	26.5	27.8	CL/SCL	PL	150-200

Solid Bush Chain

Solid Bush Chain

- Solid bush
- Fine alloy material
- Special-treatment on Pin
- Vacuum oiling
- The weariness is reduced 30% compared to seam bushing



Solid Bush Chain

Chain No.	Pitch (mm)	Width between Inner Plates	Pin Dia	Pin Length	Roller Dia	Plate Thickness Inner	Plate Thickness Outer	Tensile Strength (min)	Tensile Strength (Average)	Connecting Link (Standard)	Connecting Link (Optional)	Application By CC
415HS	12.70	4.8	3.99	13.3	7.77	1.5	1.5	16	18.5	CL/SCL	PL	50-70
420S	12.70	6.35	3.99	14.75	7.77	1.5	1.5	16	19	CL/SCL	PL	60-90
420HS	12.70	6.35	3.99	16.1	7.77	1.8	1.8	18	19.5	CL/SCL	PL	60-110
428S	12.70	7.85	4.51	16.6	8.51	1.6	1.6	17.8	19.8	CL/SCL	PL	90-125
428HS	12.70	7.85	4.51	18.4	8.51	2	2	20.6	22.5	CL/SCL	PL	110-150
520HS	15.875	6.35	5.25	18.8	10.16	2.42	2.42	30.5	31.6	CL/SCL	PL	140-250
525HS	15.875	7.9	5.25	20.4	10.16	2.42	2.42	30.5	32	CL/SCL	PL	140-250
530HS	15.875	9.4	5.25	22.1	10.16	2.42	2.42	30.5	32.4	CL/SCL	PL	140-250

O-ring Chain



- O-ring
- Solid bush
- Fine alloy material
- Special-treatment on Pin
- High quality grease



X-ring Chain



- X-ring
- Solid bush
- Fine alloy material
- Special-treatment on Pin
- High quality grease
- Whole new processing technology



O-ring Chain

Chain No.	Pitch (mm)	Width between Inner Plates	Pin Dia	Pin Length	Roller Dia	Plate Thickness Inner	Plate Thickness Outer	Tensile Strength (min)	Tensile Strength (Average)	Connecting Link (Standard)	Connecting Link (Optional)	Application By CC
<b>VO Series</b>												
428VO	12.70	7.9	4.45	21.5	8.51	2	2	20.6	22.6	CL/SCL/PL	EPL	125-190
520VO	15.875	6.35	5.24	20.7	10.16	2.2	2.2	32	34	PL	EPL	170-300
<b>O Series</b>												
415UO	12.7	4.8	3.96	15.9	7.77	1.5	1.5	17.8	18.9	CL/SCL	EPL	100-150
420O	12.7	6.35	3.96	17.5	7.77	1.5	1.5	16	19	CL/SCL	EPL	70-150
520O	15.875	6.35	5.24	20.15	10.16	2	2	26.5	28.6	PL	EPL	160-200
525HO	15.875	7.85	5.24	23.5	10.16	2.42	2.42	33	34.7	PL	EPL	170-300
525O	15.875	7.85	5.24	21.82	10.16	2	2	26.5	28.8	PL	EPL	170-220
530HO	15.875	9.4	5.24	24.95	10.16	2.42	2.42	33	35	PL	EPL	170-350
530O	15.875	9.4	5.24	23.4	10.16	2	2	26.5	29.5	PL	EPL	160-250
428HO	12.70	7.94	4.45	21.8	8.51	2	2	21	22.8	CL/SCL/PL	EPL	125-200
520HO	15.875	6.35	5.24	22	10.16	2.42	2.42	33	34.5	PL	EPL	170-300

X-ring Chain

Chain No.	Pitch (mm)	Width between Inner Plates	Pin Dia	Pin Length	Roller Dia	Plate Thickness Inner	Plate Thickness Outer	Tensile Strength (min)	Tensile Strength (Average)	Connecting Link (Standard)	Connecting Link (Optional)	Application By CC
<b>X Series</b>												
428HX	12.7	7.94	4.45	21.8	8.51	2	2	21	23.1	CL/SCL/PL	EPL	125-200
520HX	15.875	6.35	5.24	22	10.16	2.42	2.42	33	35.2	PL	EPL	170-300
520X	15.875	6.35	5.24	20.15	10.16	2	2	26.5	30.2	PL	EPL	160-250
525HX	15.875	7.85	5.24	23.5	10.16	2.42	2.42	33	35.3	PL	EPL	170-350
525X	15.875	7.85	5.24	21.82	10.16	2	2	26.5	30.4	PL	EPL	170-300
530HX	15.875	9.4	5.24	24.95	10.16	2.42	2.42	33	35.5	PL	EPL	170-350
530X	15.875	9.4	5.24	23.4	10.16	2	2	26.5	30.8	PL	EPL	160-300
<b>SX Series</b>												
520SX	15.875	6.35	5.34	22	10.2	2.4	2	38	40	PL	EPL	500-900
525SX	15.875	7.85	5.34	23.5	10.2	2.4	2	38	40	PL	EPL	600-1000
530SX	15.875	9.4	5.34	24.95	10.2	2.4	2	38	41	PL	EPL	600-1000
<b>EX Series</b>												
520EX	15.875	6.35	5.50	22	10.23	2.54	2.54	40	43	PL	EPL	700-1100
525EX	15.875	7.85	5.50	23.5	10.23	2.54	2.54	40	44	PL	EPL	900-1300
530EX	15.875	9.4	5.50	25	10.23	2.54	2.54	40	45	PL	EPL	900-1300