

CHOHO

The first A-share listed
company in the industry
Stock code: 003033

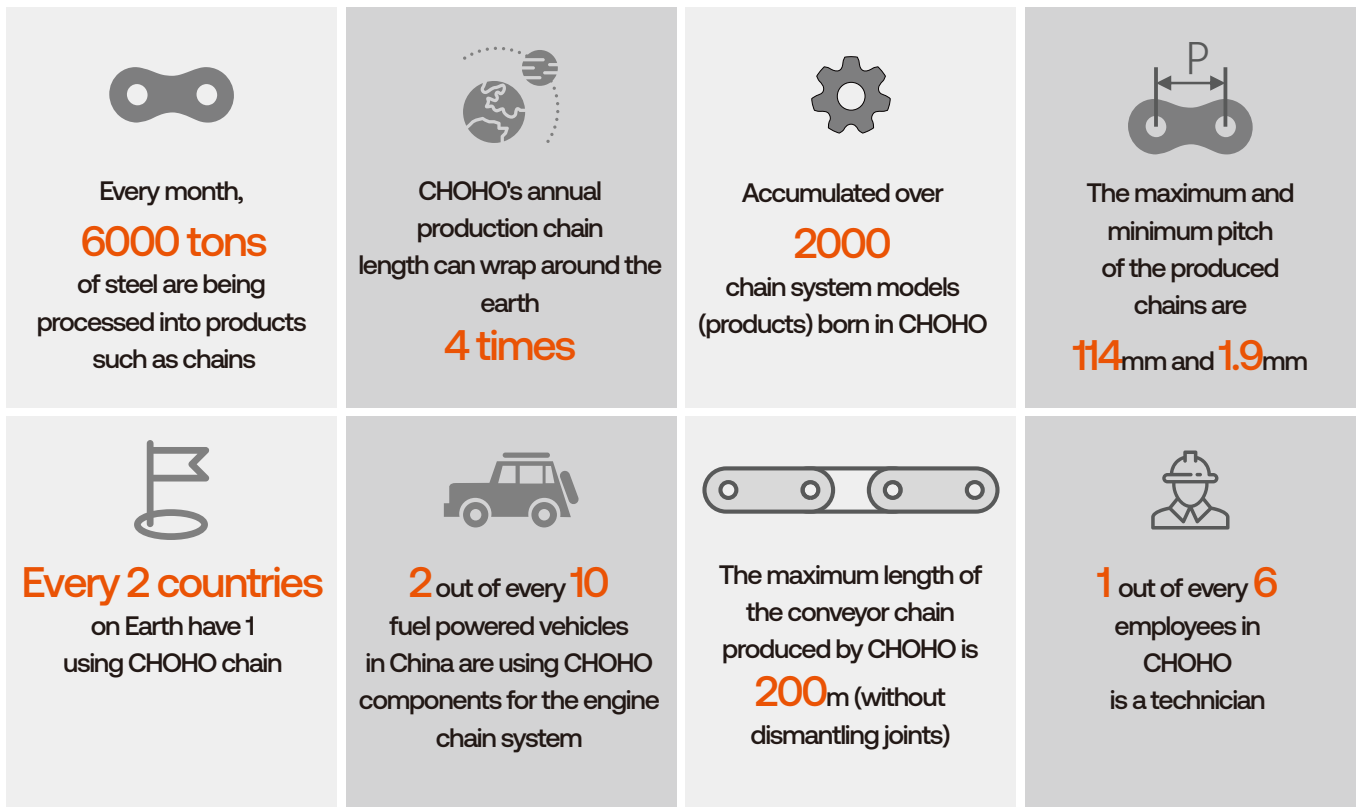


CHOHO Saw Chain

• About us •

Qingdao Choho Industrial Co., Ltd. was founded in 1999. After 26 years of development, CHOHO has become a leader in chain system technology, a state recognized enterprise technology center, a national technology innovation demonstration enterprise, and the chairman unit of the Chain Drive Branch of the China Machinery General Components Industry Association.

With industry-leading R&D technology, product quality, and service levels, CHOHO Industry has accumulated a rich and high-quality customer base. By 2025, CHOHO products have been supplied to over a hundred renowned manufacturers, including CSSC, SIASUN Robot, Mesnac, AVIC, Siwun, Haier, and Bosch. The vehicle chain systems have provided products and technical services to well-known vehicle manufacturers such as Honda, Suzuki, Yamaha, KTM R2R, BMW, CFMOTO, Piaggio, Haojue, QJMOTOR, Honda R&D, Geely, BYD, SAIC, and Knorr-Bremse. The agricultural machinery chain systems have been supplied to industry-leading manufacturers such as CLAAS, LOVOL, AGCO, John Deere, and GIMIG. CHOHO's trademarks have been registered in over 120 countries, and its products are exported to regions including Europe, the Americas, Asia, and Africa, serving over 3,000 aftermarket customers.



Product advantage



HIGH SHARPNESS



HIGH ABRASION RESISTANCE



HIGH STRENGTH



HIGH ANTI-FATIGUE



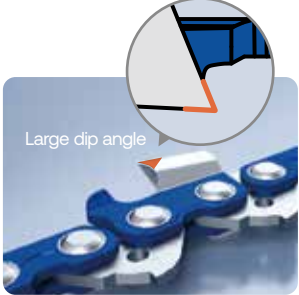
LOW VIBRATION



LOW TEMPERATURE BRITTLENESS RESISTANCE

Cutter teeth are wear-resistant and sharper

1. Adopting a large tilt angle tooth design, the cutting efficiency is improved by more than 10%.
2. Adopting German imported materials and high-precision zone temperature control processing technology to ensure durability and prevent blade breakage.
3. Adopting rigid Cr reinforced blade technology to ensure long-lasting sharpness.

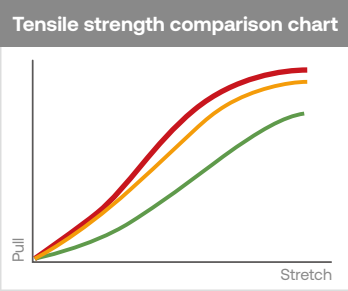


Large dip angle

Chain reinforcement, greater durability

1. Targeted optimization of thin-walled component design and strengthened pre-tensioning technology, resulting in a 10% increase in tensile strength.
2. Adopting bright blanking technology, the bright band of the chain plate hole reaches over 85%, and the chain links are smoother.
3. Adopting dual high-frequency strengthening technology to ensure high toughness of the rivet core, the surface hardness can over 770HV.

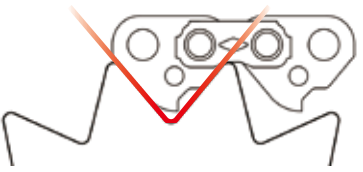
Tensile strength comparison chart



Legend:
● CHOHO ● An international brand S
● A domestic brand J

Low vibration, more comfortable

1. Adopting the invention technology of strengthening the tooth chain of automobile engines, optimizing the meshing tooth profile, and achieving more efficient and stable transmission.
2. Adopting precision blanking technology, the extremely high dimensional consistency makes each chain link more evenly stressed.
3. Perfect cushioning design makes operation more comfortable.



.404"

3/8"Pro

.325"


3/8"LP

1/4"

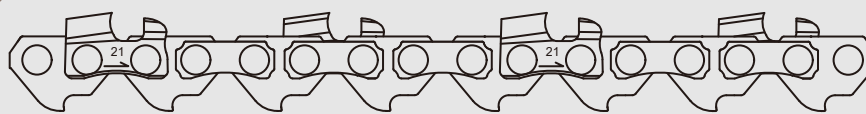
• Technical series •


1/4"A



Gauge	Cutter Type	Cutter end View	Guide bar length
1.3mm	Semi Chisel		≤ 16 inch


1/4"B



Gauge	Cutter Type	Cutter end View	Guide bar length
1.1mm	Full Chisel		≤ 14 inch

1/4"B



Gauge	Cutter Type	Cutter end View	Guide bar length
1.1mm	Semi Chisel		≤ 14 inch

3/8"LP



Gauge

Cutter Type

Cutter end View

Guide bar length

1.1mm

Semi Chisel



≤ 18 inch

1.3mm

Semi Chisel

≤ 18 inch

3/8"LP



Gauge

Cutter Type

Cutter end View

Guide bar length

1.3mm

Full Chisel



≤ 18 inch

.325"



Gauge

Cutter Type

Cutter end View

Guide bar length

1.5mm

Full Chisel



≤ 20 inch

1.6mm

Full Chisel

≤ 20 inch

3/8" Pro



Gauge

Cutter Type

Cutter end View

Guide bar length

1.5mm

Full Chisel



≤ 36 inch

1.6mm

Full Chisel

≤ 36 inch

.404"



Gauge

Cutter Type

Cutter end View

Guide bar length

1.6mm

Full Chisel



≥ 20 inch

.404"



Gauge

Cutter Type

Cutter end View

Guide bar length

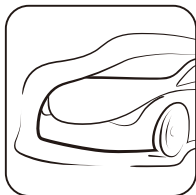
2.0mm

Slant Chisel

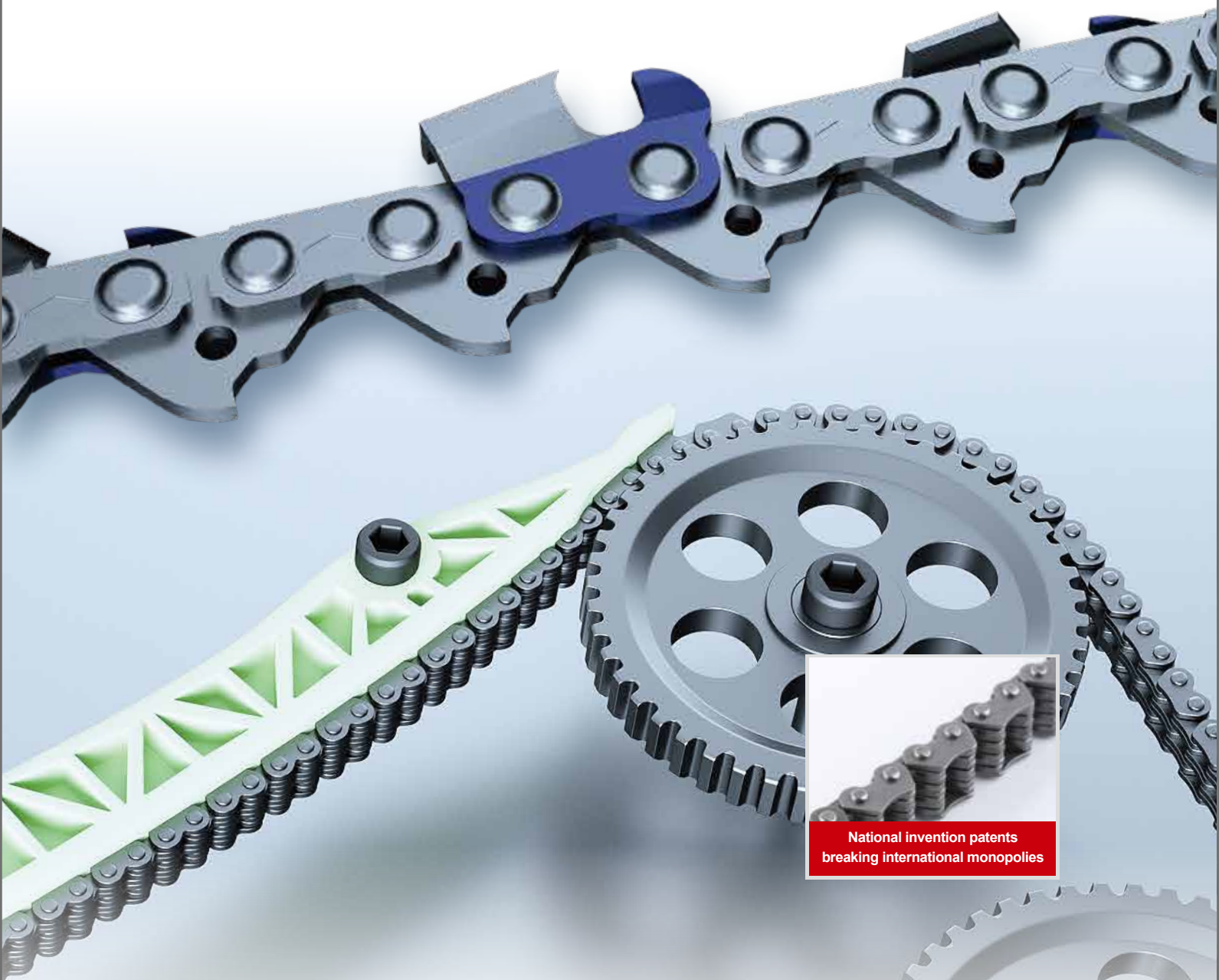


≥ 20 inch

• Technical advantage •



CHOHO invented China's first automobile engine reinforced tooth chain, breaking the international monopoly. CHOHO Saw Chain innovatively integrates strengthened toothed chain technology, redefining industry standards.



National invention patents
breaking international monopolies



WeChat



website

QINGDAO CHOHO INDUSTRIAL CO., LTD.

Add: No. 303 Chongqing Road, Pingdu Qingdao, China

T: 400-003-6363

E: Sawchainsales@chohogroup.com

<http://www.chohogroup.com>